



AUSTRALIAN BUREAU OF STATISTICS

CANBERRA

**LABOUR MOBILITY
AUSTRALIA**

DURING THE YEAR ENDING

FEBRUARY 1984

CATALOGUE NO. 6209.0

EMBARGOED UNTIL 11.30 A.M. 23 NOVEMBER 1984

**LABOUR MOBILITY, AUSTRALIA
DURING THE YEAR ENDING
FEBRUARY 1984**

R. J. CAMERON

Australian Statistician

© Commonwealth of Australia 1984

PHONE INQUIRIES	<i>for more information about these statistics</i> —contact Mr Geoff Winter on Canberra (062) 52 6661 or any of our State offices. <i>other inquiries including copies of publications</i> —contact Information Services on Canberra (062) 52 6627 or in any of our State offices.
MAIL INQUIRIES	<i>write to</i> Information Services, ABS, P.O. Box 10, Belconnen, A.C.T. 2616 or any of our State offices.

CONTENTS

<i>Table</i>		<i>Page</i>
. .	Explanatory notes	1
. .	Summary of findings	3
1.	Persons who worked at some time during the reference period: labour mobility, February 1976 to February 1984	6
	Persons who had a job at the time of the survey	
2.	Mobility and industry and occupation, February 1976 to February 1984	6
3.	Duration of current job, February 1976 to February 1984	7
	Persons who worked at some time during the year ending February 1984	
4.	Summary of labour mobility	8
	Number of employers or businesses—	
5.	Change in locality while with the same employer or business	8
6.	Age and whether had a job at February 1984	9
7.	Current labour force status, industry and occupation	9
8.	Labour mobility and industry divisions	10
9.	Labour mobility and major occupation groups	11
	Persons who left a job during the year ending February 1984	
	Reason for leaving—	
10.	Industry	12
11.	Occupation	12
12.	Family status	13
13.	Duration of job left	14
14.	Status of worker and labour force status at February 1984	15
15.	Age and marital status	16
	Duration of job left—	
16.	Age	17
17.	Educational attainment	18
	Persons who had a job at February 1984 and who changed jobs during the year ending February 1984	
	Duration of previous job—	
18.	Industry of current job	19
19.	Occupation of current job	19
	Persons who had a job at February 1984	
	Duration of current job—	
20.	Age	20
21.	Educational attainment	20
22.	Industry	21
23.	Occupation	21
. .	Technical note	22

EXPLANATORY NOTES

Introduction

In association with the February 1984 labour force survey conducted throughout Australia, persons aged fifteen years and over who had worked at some time during the year up to the end of the week prior to interview in February 1984 were asked about their labour mobility during that period. Specific questions related to the duration of current job, whether respondents had changed jobs or not and the number of jobs held during the period.

2. During the two weeks beginning Monday 6 February 1984, specially trained interviewers asked the questions of a sub-sample of 52,000 of the 72,000 respondents in the February labour force survey.

3. A preliminary publication containing a summary of the more important results was published on 29 June 1984. Results of similar surveys, the first conducted in November 1972, have been published in *Labour Mobility, Australia* (6209.0).

Scope

4. This supplementary survey to the labour force survey includes all civilians aged fifteen years and over except:

- (a) certain diplomatic personnel of overseas governments, customarily excluded from census and estimated populations;
- (b) overseas residents in Australia;
- (c) dependants of non-Australian defence forces personnel stationed in Australia;
- (d) students boarding at school, some patients in hospitals and sanatoria and inmates of jails, reformatories etc.

5. The estimates relate to persons covered by the survey in February 1984. Because of emigration, deaths and other exits not all persons with labour force experience during the period were covered. Labour mobility may relate to experience outside Australia.

Definitions

6. It is impractical to obtain information relating to a whole year which is strictly comparable with that obtained in the monthly labour force survey for which the reference period is one week. The definitions used in determining the labour force status of persons in the monthly survey depend on a detailed set of questions asked about a person's labour force activity during the reference period. For the survey of labour mobility a person is assigned to a labour force category for each of the weeks in the year on the basis of a more limited set of questions. It is for this reason that the terms *worked* and *looked for work* are used in this survey rather than the rigidly defined terms *employed* and *unemployed* used in the monthly labour force survey.

7. Persons in the *labour force* are those persons who, *for those weeks*, reported having either worked or looked for work as defined in paragraphs 8 and 9.

8. Persons who *worked* are those persons who, *for those weeks*, reported having either worked or been on paid leave. Periods of one week or more on strike or time off without pay are not classified as worked.

9. Persons who *looked for work* are those persons who, *for those weeks*, reported having been out of work and looking for a job.

10. Persons *out of the labour force* are those who, *during any week*, neither worked nor looked for work as defined in paragraphs 8 and 9.

11. For the purposes of the survey, a *job* is defined as:

- (a) employment as a wage or salary earner (or unpaid family helper) by a particular employer, in a particular locality; or
- (b) self-employment (with or without employees) in a particular locality.

12. *Locality*. In capital cities and major towns each suburb is considered to be a different locality.

13. *Job mobility* is defined as a change in job. A *change of job* may involve a change of employer without a change of job location; a change of location without a change of employer; or a change in both employer and location. For example, the movement of an employer's operations to premises in a different location would entail a change of job for employees who moved to the new location. Promotion or transfer of an employee which involves a move to premises in a different location would also constitute a change of job. It should be noted, however, that for a person who works at different sites for the same employer (for example, a construction worker), his base of operations (i.e. his employer's office, depot, yard, etc.) is considered to be his place of work.

14. Persons are classified as *married* if they are reported as being married (including de facto) and their spouse was a usual resident of the household at the time of the survey. The *not-married* category includes persons who have never married, or are separated, widowed or divorced, as well as those who, although reported as being married, did not have a spouse who usually lived in the household. For effects on estimates of marital status, see paragraph 19.

Population benchmarks

15. Following the change in official population estimates to a place of usual residence basis after the 1981 Census, the population benchmarks used in this survey are compiled according to place of usual residence. For an explanation of the new conceptual basis of population estimates see *The Labour Force, Australia* (6203.0).

16. The change from 1976 Population Census based benchmarks to 1981 Population Census based benchmarks has had little effect on the movement in the estimates between the February 1983 and February 1984 surveys.

Discontinuity in the series

17. The estimates for February 1983 and February 1984 are not strictly comparable with those obtained from previous surveys. The reference period for the February 1980 and prior surveys was the previous calendar year (e.g. 1 January to 31 December 1979). The reference period for the February 1981 and 1982 surveys was from the beginning of the previous February to the end of the week prior to interview. As interviews were conducted over the second and third week of February, the reference period could extend to 54 weeks. For the February 1983 and 1984 surveys the reference period is the 52 weeks up to the end of the week prior to interview. Due to the change in the reference period timing, some estimates, particularly those for groups who enter the labour force during the earlier months of the year (e.g. 15 to 19 year olds) will also be affected from February 1981 survey onwards.

18. In the February 1981 survey, reason for leaving a job was only asked of persons who changed jobs. For all previous and subsequent surveys, reason for leaving a job was asked of the wider population of persons who left a job.

19. Paragraph 14 outlines the definition of marital status now used in this survey. Consequently, estimates of marital status contained in this publication are not comparable with estimates published for this survey in previous years, which classified as married all respondents who reported that they were married or separated.

Reliability of the estimates

20. Estimates in this publication are subject to two sources of error:

- (a) *sampling error*: since the estimates are based on information obtained from occupants of a sample of dwellings they are subject to sampling variability; that is they may differ from the figures that would have been produced if all dwellings had been included in the survey. One measure of the likely difference is given by the *standard error*. More information about this topic will be found in the Technical note.

- (b) *non-sampling error*: inaccuracies may occur because of imperfections in reporting by interviewers and respondents and errors made in the coding and processing of data. These inaccuracies may occur in any enumeration, whether it be a full count or a sample. Every effort is made to reduce the non-sampling error to a minimum by careful design of questionnaires, intensive training and supervision of interviewers and efficient operating procedures.

Related publications

21. Other ABS publications which may be of interest include:

The Labour Force, Australia (6203.0)—issued monthly

Labour Force Experience, Australia, During the Year Ending February 1984 Preliminary (6205.0)

Internal Migration, Australia (3408.0)—issued irregularly

22. Current publications produced by the ABS are listed in the *Catalogue of Publications, Australia* (1101.0). The ABS also issues, on Tuesdays and Fridays, a *Publications Advice* (1105.0) which lists publications to be released in next few days. The Catalogue and Publications Advice are available from any ABS office.

Symbols and other usages

- * subject to sampling variability too high for most practical uses. See paragraph 20 above.
- .. not applicable
- n.e.c. not elsewhere classified

23. Because figures have been rounded, discrepancies may occur between sums of the component items and totals.

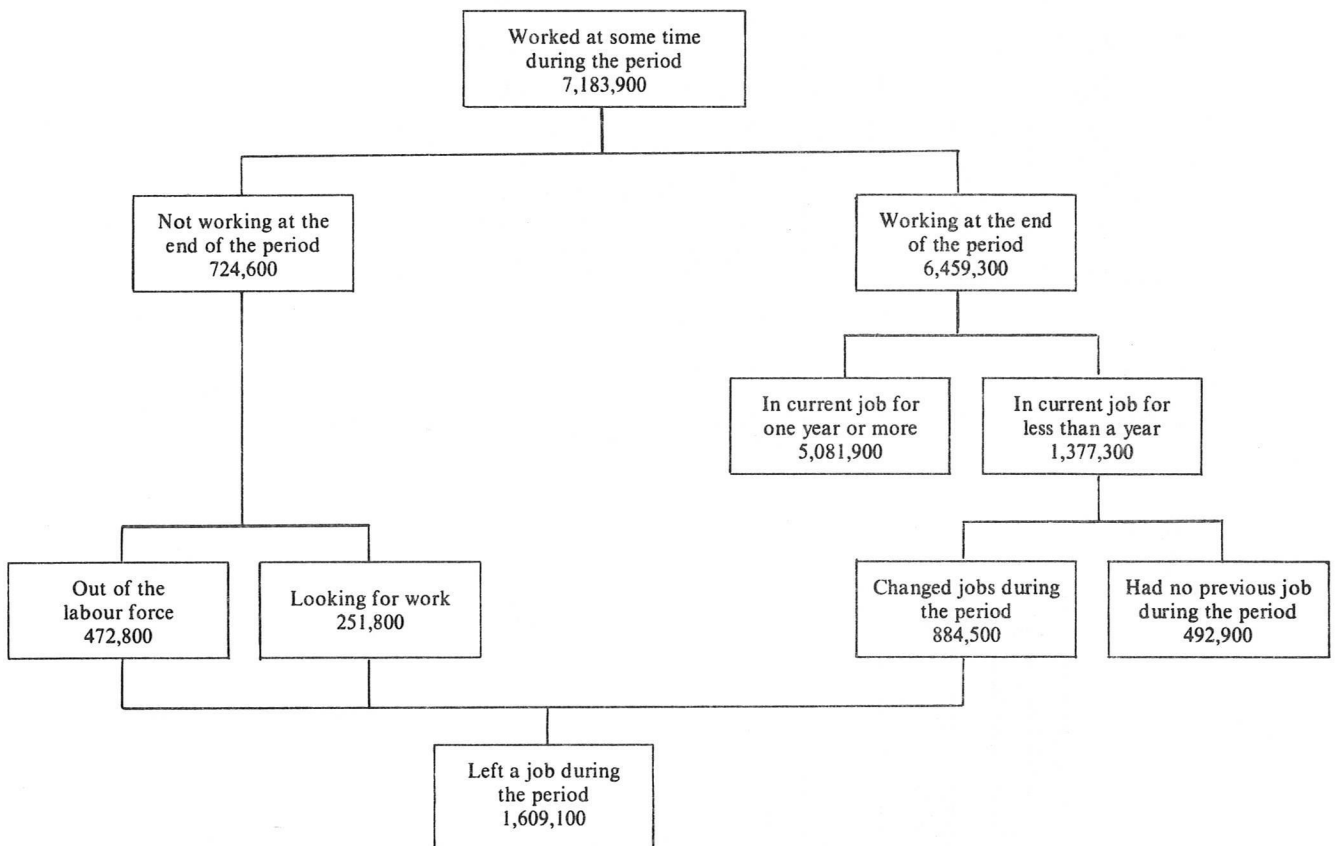
R. J. CAMERON
Australian Statistician

SUMMARY OF FINDINGS

7,183,900 persons worked at some time during the year ending February 1984, made up of 6,459,300 who were working in February 1984 and 724,600 who were not working. 5,081,900 persons had been in the same job for the whole 12-month period. The remaining 2,102,000 (about 30 per cent of those who had worked at some time during the year) had started or left a job during the year.

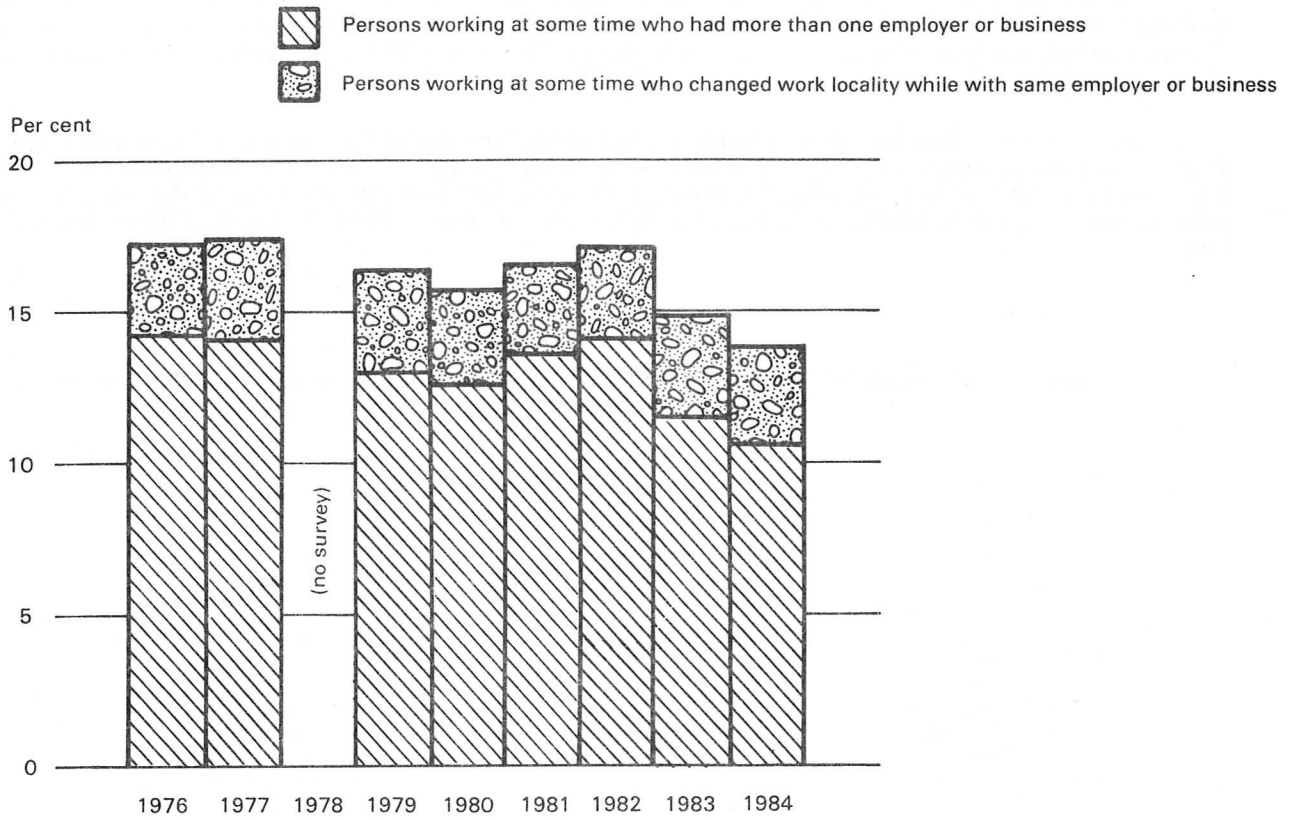
Less than half (884,500) of those who had started or left a job during the year had changed jobs, the remainder either moving into or out of a job; 251,800 had left a job and were looking for work in February 1984 and 472,800 had left the labour force. 492,900 were working in February 1984 having had no previous job during the year. 15.6 per cent of those who had left a job during the year were looking for work in February 1984 and 29.4 per cent were out of the labour force.

DIAGRAM 1. PERSONS WHO WORKED AT SOME TIME DURING THE YEAR ENDING FEBRUARY 1984
(Source of data: Table 4)



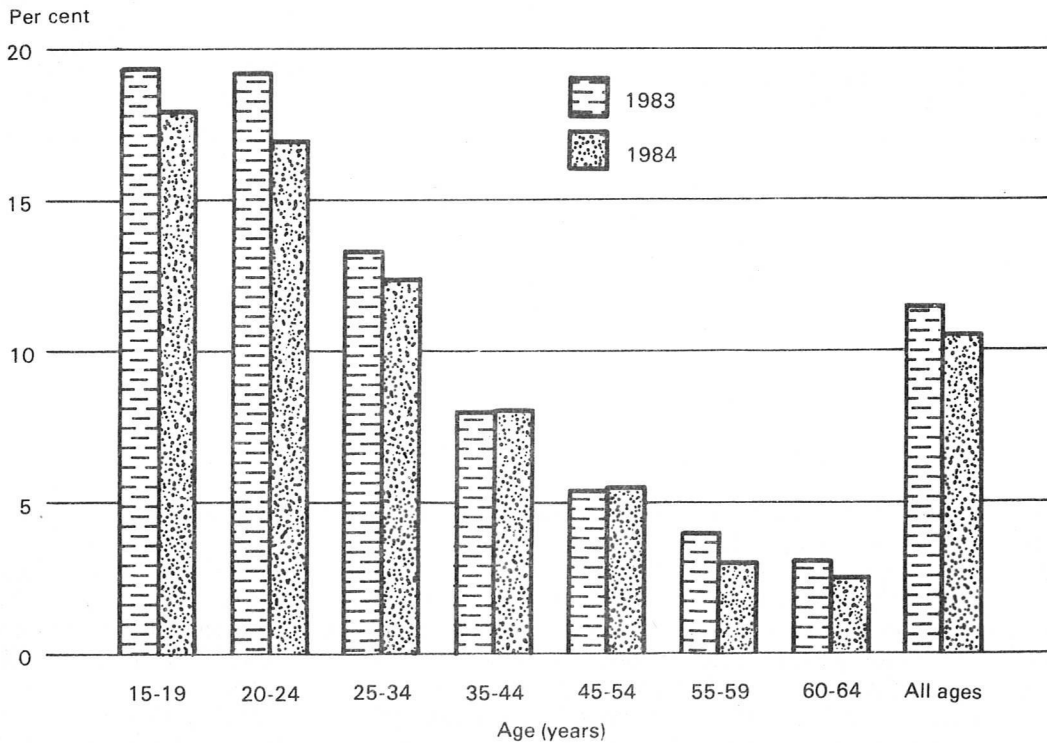
Job mobility may be defined as having more than one employer during a reference period or changing work location without changing employer. Of the 7,183,900 persons who worked at some time during the year ending February 1984, 13.8 per cent were job mobile by this definition, comprising 10.6 per cent who had more than one employer or business (including a small proportion who also separately changed work locality) and 3.2 per cent who changed work locality only. In the February 1976 survey these proportions were 17.2 per cent, 14.2 per cent and 3.0 per cent respectively. There was a general decline in job mobility over the period 1976 to 1980, reaching a low of 15.7 per cent in 1980 before increasing in 1981 and 1982. It then decreased again in 1983 and 1984, in both years changing by larger amounts than in any of the previous six years. These decreases were largely due to a decline in the number of persons who had had more than one employer or business during the year (11.4 per cent to 10.6 per cent between 1983 and 1984).

DIAGRAM 2. PERSONS WHO WORKED AT SOME TIME DURING THE REFERENCE PERIOD : JOB MOBILITY, FEBRUARY 1976 TO FEBRUARY 1984
(Source of data : Table 1)



Job mobility within different age groups steadily falls as age increases.

DIAGRAM 3. PERSONS WHO CHANGED EMPLOYERS IN THE YEARS ENDING FEBRUARY 1983 AND FEBRUARY 1984(a) : AGE
(Source of data : Table 6)

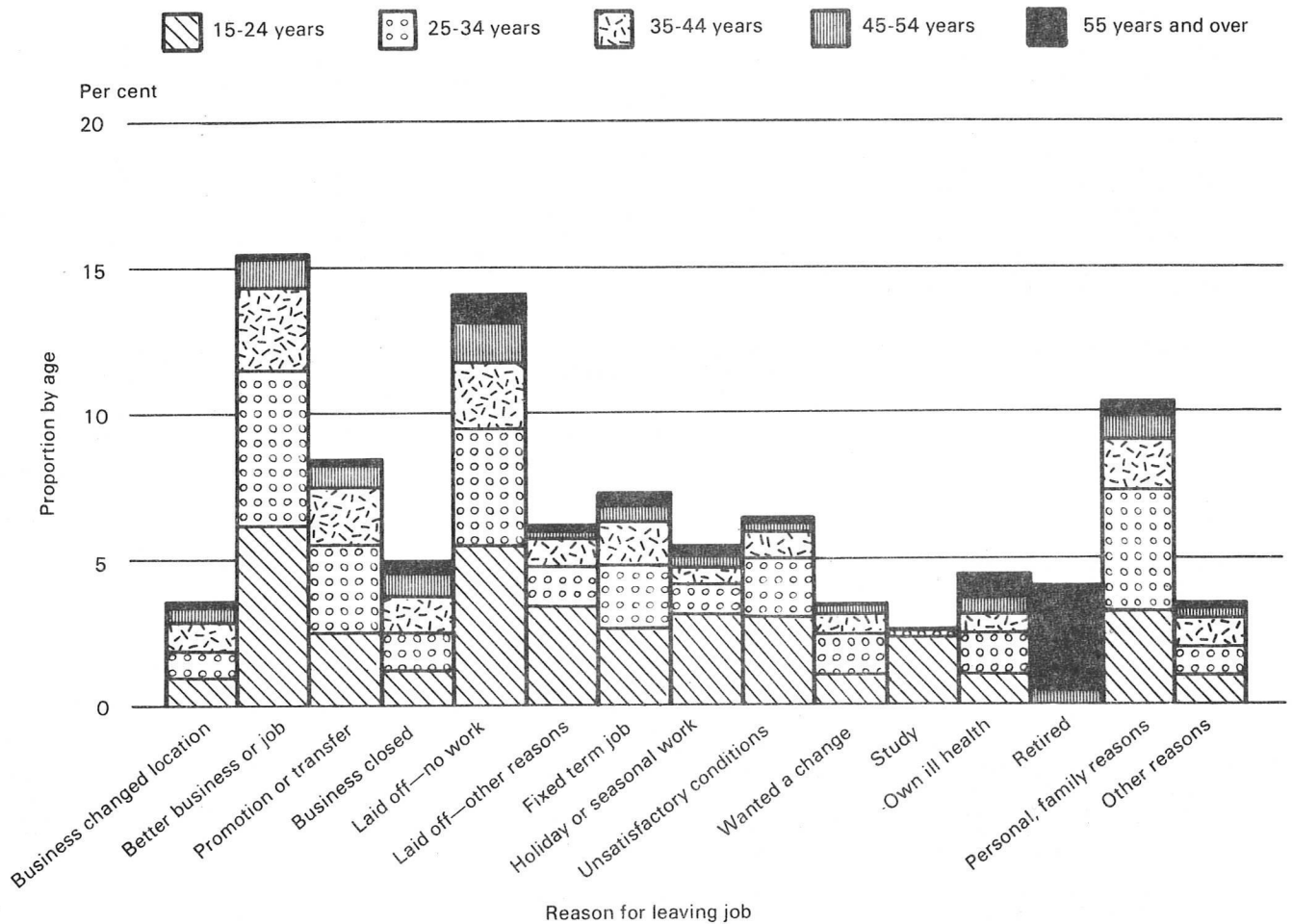


(a) As a proportion of all persons who worked at some time during these years.

Persons who left a job

One fifth (20.3 per cent) of those persons who left a job during the year ending February 1984 did so because they were laid off. The majority of these were younger persons (15-34 years of age). About one in five (20.2 per cent) persons who left a job did so for other involuntary reasons, being business changed location, business closed, fixed-term job and own ill-health. Younger persons left a job for a better business or job or because of unsatisfactory conditions more than older persons. About one in 25 (4.1 per cent) persons left a job to retire; the majority of these were persons aged 55 years and over.

DIAGRAM 4. PERSONS WHO LEFT A JOB DURING THE YEAR ENDING FEBRUARY 1984 : REASON FOR LEAVING JOB
(Source of data : Table 15)



44.1 per cent of persons working at the time of the survey who changed jobs during the year ending February 1984 had held their previous job for less than one year. This proportion varied across industries and occupations—36.4 per cent of persons moving into the finance, property and business services industry and 38.6 per cent of those moving into transport and storage held their previous job for less than one year, compared with 52.6 per cent moving into agriculture, etc. and 51.6 moving into construction (Table 18). Only 23.4 per cent of persons moving into administrative, executive and managerial occupations held their previous job for less than one year compared with 57.2 per cent moving into farming, fishing and timber getting occupations and 50.3 per cent moving into trades, etc. occupations (Table 19).

TABLE 1. PERSONS WHO WORKED AT SOME TIME DURING THE REFERENCE PERIOD : LABOUR MOBILITY, FEBRUARY 1976 TO FEBRUARY 1984
(per cent)

Whether changed employer or business and whether changed locality	February 1976(a)	February 1977(a)	February 1979(a)	February 1980(a)	February 1981(b)	February 1982(b)	February 1983(b)	February 1984(b)
MALES								
Job mobile	18.6	18.7	17.8	16.7	17.4	17.9	15.6	14.4
Changed employer but not locality	14.2	13.9	12.7	12.0	13.5	13.7	10.2	9.8
Changed both employer and locality	0.8	1.0	1.2	1.3	0.8	0.9	1.5	1.0
Changed locality but not employer	3.5	3.8	3.9	3.5	3.1	3.3	3.9	3.6
Did not change employer or locality	81.4	81.3	82.2	83.3	82.6	82.0	84.4	85.6
FEMALES								
Job mobile	15.0	15.3	13.8	14.1	15.0	15.8	13.7	12.8
Changed employer but not locality	12.4	12.2	10.4	10.3	11.8	12.5	9.8	9.5
Changed both employer and locality	0.5	0.6	0.8	1.3	0.7	0.8	1.1	0.7
Changed locality but not employer	2.1	2.5	2.6	2.5	2.5	2.5	2.8	2.5
Did not change employer or locality	85.0	84.8	86.2	85.9	85.0	84.3	86.3	87.2
PERSONS								
Job mobile	17.2	17.4	16.3	15.7	16.5	17.1	14.9	13.8
Changed employer but not locality	13.5	13.3	11.8	11.3	12.8	13.2	10.1	9.7
Changed both employer and locality	0.7	0.8	1.1	1.3	0.8	0.9	1.4	0.9
Changed locality but not employer	3.0	3.3	3.4	3.1	2.9	3.0	3.4	3.2
Did not change employer or locality	82.8	82.6	83.7	84.3	83.5	82.9	85.2	86.2

(a) As a proportion of persons in the survey who had worked at some time during the calendar year prior to the survey. (b) As a proportion of persons in the survey who had worked at some time during the previous twelve months.

TABLE 2. PERSONS WHO HAD A JOB AT THE TIME OF THE SURVEY : MOBILITY(a) AND INDUSTRY AND OCCUPATION, FEBRUARY 1976 TO FEBRUARY 1984

	February 1976(b)	February 1979(b)	February 1980(b)	February 1981(c)	February 1982(c)	February 1983(c)	February 1984(c)	
—per cent—								(' 000)
MALES								
In current job for less than one year	20.9	22.9	20.5	23.1	23.0	18.8	19.4	780.7
Had no other job in the period	4.4	6.0	6.3	6.3	5.8	3.9	5.3	211.2
Changed jobs during the period	16.5	17.0	14.3	16.8	17.2	14.9	14.2	569.5
Changed industry division(a)	7.3	8.5	6.3	7.1	7.0	5.6	5.3	212.5
Did not change industry division(a)	9.2	8.5	8.0	9.7	10.2	9.3	8.9	357.0
Changed occupation group(a)	5.5	7.3	4.7	5.1	4.8	4.4	4.4	178.8
Did not change occupation group(a)	11.0	9.7	9.6	11.7	12.4	10.5	9.7	390.8
FEMALES								
In current job for less than one year	27.3	27.6	25.3	28.7	28.0	23.3	24.5	596.6
Had no other job in the period	13.1	13.8	12.8	13.7	12.3	9.9	11.5	281.7
Changed jobs during the period	14.2	13.8	12.5	15.1	15.7	13.4	12.9	314.9
Changed industry division(a)	6.4	7.7	5.3	6.6	7.0	5.4	5.2	125.7
Did not change industry division(a)	7.8	6.1	7.2	8.4	8.7	8.1	7.8	189.2
Changed occupation group(a)	4.4	5.8	3.9	4.8	5.0	4.2	4.0	97.1
Did not change occupation group(a)	9.8	8.0	8.6	10.3	10.6	9.3	8.9	217.8
PERSONS								
In current job for less than one year	23.1	24.6	22.3	25.1	24.8	20.5	21.3	1,377.3
Had no other job in the period	7.4	8.7	8.6	9.0	8.2	6.1	7.6	492.9
Changed jobs during the period	15.7	15.9	13.6	16.2	16.6	14.4	13.7	884.5
Changed industry division(a)	7.0	8.2	5.9	6.9	7.0	5.5	5.2	338.3
Did not change industry division(a)	8.7	7.6	7.7	9.3	9.6	8.8	8.5	546.2
Changed occupation group(a)	5.1	6.8	4.4	5.0	4.9	4.3	4.3	275.9
Did not change occupation group(a)	10.6	9.1	9.2	11.2	11.7	10.1	9.4	608.6

(a) As shown in Tables 8 and 9. (b) As a proportion of all persons working at the end of the calendar year prior to the survey. (c) As a proportion of all persons working at the time of the survey.

TABLE 3. PERSONS WHO HAD A JOB AT THE TIME OF THE SURVEY : DURATION OF CURRENT JOB, FEBRUARY 1976 TO FEBRUARY 1984

Duration of current job	February 1976(a)	February 1979(a)	February 1980(a)	February 1981(b)	February 1982(b)	February 1983(b)	February 1984(b)	
	—per cent—							(' 000)
MALES								
Under 3 months	7.5	6.9	6.6	9.2	8.7	7.6	8.6	344.4
3 and under 6 months	5.2	6.9	5.3	5.6	5.8	4.0	4.4	177.8
6 and under 12 months	8.3	9.2	8.6	8.3	8.4	7.2	6.4	258.5
<i>Total under 1 year</i>	20.9	22.9	20.5	23.1	23.0	18.8	19.4	780.7
1 and under 2 years	11.4	12.2	12.5	12.6	12.2	13.0	10.1	407.2
2 and under 3 years	9.9	8.1	8.8	8.7	9.2	12.0	11.3	452.6
3 and under 5 years	15.0	14.9	14.2	14.1	14.1	16.0	16.2	651.1
5 years and over	42.8	41.9	43.9	41.6	41.5	40.3	43.0	1,727.8
<i>Total</i>	100.0	100.0	100.0	100.0	100.0	100.0	100.0	4,019.4
FEMALES								
Under 3 months	8.8	8.0	7.8	11.3	10.7	9.0	10.2	249.4
3 and under 6 months	7.0	7.8	6.2	6.7	7.2	5.3	5.6	136.8
6 and under 12 months	11.5	11.8	11.4	10.8	10.0	9.0	8.6	210.4
<i>Total under 1 year</i>	27.3	27.6	25.3	28.8	28.0	23.3	24.5	596.6
1 and under 2 years	16.1	15.7	15.8	16.0	15.2	15.8	13.9	339.0
2 and under 3 years	13.6	10.7	11.2	9.6	10.7	14.5	12.7	310.6
3 and under 5 years	16.8	17.1	17.1	15.8	15.1	16.7	17.0	415.9
5 years and over	26.2	28.8	30.5	29.9	31.1	29.8	31.9	777.7
<i>Total</i>	100.0	100.0	100.0	100.0	100.0	100.0	100.0	2,439.9
PERSONS								
Under 3 months	7.9	7.3	7.0	9.9	9.5	8.1	9.2	593.8
3 and under 6 months	5.8	7.2	5.6	6.0	6.3	4.5	4.9	314.6
6 and under 12 months	9.4	10.1	9.6	9.2	9.0	7.9	7.3	468.9
<i>Total under 1 year</i>	23.1	24.6	22.3	25.1	24.8	20.5	21.3	1,377.3
1 and under 2 years	13.0	13.4	13.7	13.8	13.3	14.0	11.6	746.2
2 and under 3 years	11.1	9.0	9.7	9.0	9.8	12.9	11.8	763.2
3 and under 5 years	15.6	15.7	15.3	14.7	14.4	16.2	16.5	1,067.0
5 years and over	37.3	37.3	39.0	37.3	37.6	36.4	38.8	2,505.5
<i>Total</i>	100.0	100.0	100.0	100.0	100.0	100.0	100.0	6,459.3

(a) For persons in the survey who were working at the end of the previous calendar year, time in job held at end of previous calendar year. (b) Refers to time in their current job of persons working at the time of the survey.

**TABLE 4. PERSONS WHO WORKED AT SOME TIME DURING THE YEAR ENDING FEBRUARY 1984:
SUMMARY OF LABOUR MOBILITY
(' 000)**

	<i>Married males</i>	<i>All males</i>	<i>Married females</i>	<i>All females</i>	<i>Persons</i>
Worked at some time during the year	2,843.5	4,352.6	1,689.2	2,831.3	7,183.9
Number of employers worked for(a) (or businesses) during the year—					
1	2,590.8	3,883.5	1,563.8	2,541.8	6,425.4
2	204.8	364.9	104.1	230.5	595.4
3	33.3	68.2	16.7	42.8	111.0
4 and over	14.7	35.9	4.6	16.3	52.2
Did not have a job at February 1984	158.1	333.2	246.4	391.4	724.6
Had a job at February 1984	2,685.3	4,019.4	1,442.8	2,439.9	6,459.3
For one year or more in current job	2,289.5	3,238.6	1,160.0	1,843.3	5,081.9
For less than one year in current job	395.8	780.7	282.8	596.6	1,377.3
Did not have a previous job during the year	62.2	211.2	139.6	281.7	492.9
Had a previous job during the year	333.6	569.5	143.2	314.9	884.5
Left a job during the year	491.7	902.8	389.7	706.3	1,609.1
Did not leave a job during the year	2,351.8	3,449.8	1,299.5	2,125.0	5,574.8

(a) Not including second jobs of multiple jobholders.

**TABLE 5. PERSONS WHO WORKED AT SOME TIME DURING THE YEAR ENDING FEBRUARY 1984:
NUMBER OF EMPLOYERS OR BUSINESSES AND CHANGES IN LOCALITY
(' 000)**

<i>Change in locality while with the same employer or in the same business(a)</i>	<i>Had one employer, business</i>	<i>Had more than one employer, business(a)</i>				<i>Total</i>	<i>Total</i>
		<i>Number of employers, businesses</i>			<i>Total</i>		
		<i>2</i>	<i>3</i>	<i>4 and over</i>			
MALES							
Did not change locality	3,724.7	338.4	59.6	27.6	425.7	4,150.4	
Changed locality	158.8	26.5	8.5	8.3	43.4	202.1	
Number of changes—							
1	121.5	20.2	5.1	*	27.5	149.0	
2	14.7	*	*	*	6.7	21.3	
3	10.7	*	*	*	*	14.2	
4 and over	11.9	*	*	*	5.7	17.7	
<i>Total</i>	3,883.5	364.9	68.2	35.9	469.0	4,352.6	
FEMALES							
Did not change locality	2,469.6	216.4	37.5	14.5	268.4	2,738.0	
Changed locality	72.2	14.1	5.2	*	21.1	93.3	
Number of changes—							
1	57.7	11.6	*	*	16.2	73.8	
2 and over	14.5	*	*	*	4.9	19.4	
<i>Total</i>	2,541.8	230.5	42.8	16.3	289.5	2,831.3	
PERSONS							
Did not change locality	6,194.4	554.8	97.2	42.1	694.1	6,888.5	
Changed locality	231.0	40.6	13.8	10.1	64.5	295.4	
Number of changes—							
1	179.2	31.7	8.9	*	43.6	222.8	
2	21.4	*	*	*	8.9	30.3	
3	13.1	*	*	*	4.7	17.8	
4 and over	17.2	*	*	*	7.2	24.4	
<i>Total</i>	6,425.4	595.4	111.0	52.2	758.5	7,183.9	

(a) Not including second jobs of multiple jobholders.

TABLE 6. PERSONS WHO WORKED AT SOME TIME DURING THE YEAR ENDING FEBRUARY 1984: NUMBER OF EMPLOYERS OR BUSINESSES, AGE AND WHETHER HAD A JOB AT FEBRUARY 1984 ('000)

Age group (years)	Number of employers or businesses									
	Males					Females				
	1	2	3	4 and over	Total	1	2	3	4 and over	Total
HAD A JOB AT FEBRUARY 1984										
15-19	255.8	43.7	8.0	5.0	312.5	238.0	38.1	7.5	*	286.1
20-24	426.3	63.9	16.1	7.1	513.5	358.3	59.9	10.0	*	432.4
25-34	959.9	113.9	21.7	9.5	1,104.9	555.3	55.9	10.8	*	626.4
35-44	847.9	61.8	9.2	*	922.5	526.1	35.2	5.4	*	568.7
45-54	656.7	34.5	*	*	695.7	345.7	11.4	*	*	359.7
55-59	265.8	7.9	*	*	275.7	103.4	*	*	*	105.5
60-64	130.0	*	*	*	133.9	41.4	*	*	*	42.4
65 and over	60.0	*	*	*	60.8	18.7	*	*	*	18.8
Total	3,602.4	329.2	59.0	28.7	4,019.4	2,186.8	203.4	36.2	13.5	2,439.9
DID NOT HAVE A JOB AT FEBRUARY 1984										
15-19	54.5	10.9	*	*	69.0	51.2	7.6	*	*	62.5
20-24	51.3	8.8	*	*	64.0	57.4	7.9	*	*	67.1
25-34	48.3	7.0	*	*	60.0	113.7	6.3	*	*	122.1
35-44	32.4	5.1	*	*	39.2	66.8	*	*	*	71.1
45-54	24.2	*	*	*	29.3	35.0	*	*	*	37.2
55-59	21.3	*	*	*	21.7	14.6	*	*	*	14.8
60-64	29.0	*	*	*	29.7	11.3	*	*	*	11.3
65 and over	20.0	*	*	*	20.4	5.0	*	*	*	5.3
Total	281.1	35.7	9.2	7.2	333.2	355.0	27.0	6.6	*	391.4
TOTAL										
15-19	310.3	54.6	10.1	6.4	381.5	289.2	45.7	10.2	*	348.6
20-24	477.7	72.7	17.8	9.3	577.4	415.7	67.8	11.2	4.8	499.5
25-34	1,008.3	120.9	24.7	11.1	1,164.9	669.0	62.2	12.4	4.9	748.5
35-44	880.3	66.9	10.3	*	961.6	592.8	38.7	6.2	*	639.8
45-54	680.9	37.0	*	*	725.0	380.7	13.1	*	*	396.9
55-59	287.0	8.3	*	*	297.4	118.0	*	*	*	120.3
60-64	159.0	*	*	*	163.5	52.7	*	*	*	53.7
65 and over	80.1	*	*	*	81.2	23.7	*	*	*	24.1
Total	3,883.5	364.9	68.2	35.9	4,352.6	2,541.8	230.5	42.8	16.3	2,831.3

TABLE 7. PERSONS WHO WORKED AT SOME TIME DURING THE YEAR ENDING FEBRUARY 1984: NUMBER OF EMPLOYERS OR BUSINESSES, CURRENT LABOUR FORCE STATUS, INDUSTRY AND OCCUPATION ('000)

	Number of employers or businesses									
	Males					Females				
	1	2	3	4 and over	Total	1	2	3	4 and over	Total
Total	3,883.5	364.9	68.2	35.9	4,352.6	2,541.8	230.5	42.8	16.3	2,831.3
<i>Labour force status at February 1984—</i>										
Out of the labour force	143.0	10.1	*	*	157.9	295.2	14.4	*	*	314.9
Looking for work	138.1	25.6	6.6	5.1	175.3	59.8	12.6	*	*	76.5
Working	3,602.4	329.2	59.0	28.7	4,019.4	2,186.8	203.4	36.2	13.5	2,439.9
<i>Industry of current job—</i>										
Agriculture, forestry, fishing and hunting	280.1	17.4	*	4.5	304.8	101.5	4.9	*	*	107.9
Mining; electricity, gas and water	206.5	9.7	*	*	217.9	23.0	*	*	*	25.6
Manufacturing	775.0	61.8	11.4	*	852.4	272.5	19.9	*	*	296.7
Construction	325.7	38.2	9.6	5.9	379.3	44.5	*	*	*	46.7
Wholesale and retail trade	612.6	82.6	12.3	*	711.2	498.8	50.2	7.8	*	559.8
Transport and storage; communication	375.8	24.5	*	*	406.6	87.2	5.5	*	*	94.4
Finance, property and business services	289.3	30.7	5.1	*	326.0	256.6	29.4	5.2	*	292.5
Community services	384.2	22.6	5.1	*	414.0	606.9	52.7	9.9	*	672.1
Public administration and defence	205.9	13.1	*	*	221.8	97.3	9.8	*	*	108.6
Recreation, personal and other services	147.3	28.7	5.7	*	185.4	198.5	27.1	6.5	*	235.5
<i>Occupation of current job—</i>										
Professional, technical, etc.	520.5	34.7	4.5	*	562.6	388.0	36.7	9.2	*	437.6
Administrative, executive and managerial	339.0	29.8	*	*	372.0	55.4	*	*	*	58.6
Clerical	302.9	18.6	*	*	325.9	770.4	75.9	13.3	*	862.1
Sales	222.1	37.9	7.6	*	268.0	281.2	32.5	*	*	320.2
Farmers, fishermen, timber-getters, etc.	324.3	22.8	*	4.9	356.0	104.0	5.6	*	*	110.6
Miners, quarry workers, etc.	30.4	*	*	*	33.7	*	*	*	*	*
Transport and communication	250.1	22.7	*	*	277.7	44.0	*	*	*	47.0
Tradesmen, production-process workers and labourers, n.e.c.	1,408.0	135.7	26.0	14.1	1,583.8	194.5	12.9	*	*	211.2
Service, sport and recreation	205.2	24.8	7.3	*	239.6	349.1	33.7	6.1	*	392.3

TABLE 8. PERSONS WHO WORKED AT SOME TIME DURING THE YEAR ENDING FEBRUARY 1984 : LABOUR MOBILITY AND INDUSTRY DIVISIONS ('000)

	Industry division(a)										Total
	Agriculture	Manufacturing	Construction	Wholesale and retail trade	Transport and storage	Finance, property and business services	Public administration and defence	Community services	Recreation, personal and other services	Other	
MALES											
Working at time of survey—											
For one year or more	263.8	705.6	289.4	536.3	259.0	245.0	187.6	348.3	126.6	277.0	3,238.6
Less than one year—											
No previous job during the year	13.0	53.4	20.5	53.6	8.7	16.0	10.5	11.5	16.5	7.5	211.2
Had a previous job	28.0	93.4	69.4	121.3	40.4	65.0	23.6	54.1	42.4	31.9	569.5
Same industry(b)	15.8	52.1	48.1	81.0	23.3	43.6	11.4	36.4	25.3	20.0	357.0
Changed industry to(b)	12.2	41.3	21.3	40.3	17.1	21.4	12.2	17.7	17.0	12.0	212.5
Changed industry from(b)(c)	15.4	47.9	21.9	52.3	12.0	21.2	9.6	11.2	14.8	6.3	212.5
Not working at time of survey(c)	25.0	88.6	39.2	75.1	18.8	16.0	10.8	23.8	24.9	11.2	333.2
Began last job more than a year ago(c)	8.8	55.0	21.6	45.8	12.6	9.8	7.4	16.6	12.3	9.2	199.1
Currently looking for work(c)	*	32.7	14.5	23.0	5.5	*	*	5.9	5.8	*	101.6
Out of the labour force(c)	4.6	22.3	7.1	22.7	7.0	5.7	5.2	10.7	6.5	5.6	97.5
Began and left a job during the year(c)	16.2	33.6	17.6	29.3	6.2	6.2	*	7.2	12.5	*	134.2
Currently looking for work(c)	9.3	21.3	12.5	12.9	*	*	*	*	5.6	*	73.8
Out of the labour force(c)	6.9	12.3	5.1	16.5	*	*	*	4.5	7.0	*	60.4
FEMALES											
Working at time of survey—											
For one year or more	94.0	230.3	41.2	393.2	48.2	211.2	82.6	537.0	155.5	50.2	1,843.3
Less than one year—											
No previous job during the year	7.2	35.8	*	93.8	*	32.6	11.1	51.9	39.6	*	281.7
Had a previous job	6.7	30.5	*	72.8	7.5	49.1	15.0	82.9	40.4	7.5	314.9
Same industry(b)	*	15.1	*	45.5	*	29.3	5.8	59.3	23.0	*	189.2
Changed industry to(b)	*	15.4	*	27.3	*	19.8	9.2	23.6	17.4	*	125.7
Changed industry from(b)(c)	4.6	15.8	*	34.7	*	18.7	4.7	18.2	19.9	*	125.7
Not working at time of survey(c)	16.4	46.6	*	109.5	5.4	33.8	14.1	98.1	58.2	5.3	391.4
Began last job more than a year ago(c)	7.9	26.8	*	63.7	*	23.5	7.1	62.8	28.0	*	229.4
Currently looking for work(c)	*	5.6	*	10.3	*	6.6	*	6.6	*	*	35.5
Out of the labour force(c)	7.6	21.2	*	53.4	*	16.9	6.7	56.2	23.6	*	193.9
Began and left a job during the year(c)	8.5	19.8	*	45.7	*	10.3	7.0	35.4	30.2	*	162.0
Currently looking for work(c)	*	7.2	*	12.6	*	*	*	7.1	7.6	*	41.0
Out of the labour force(c)	7.5	12.5	*	33.2	*	7.8	4.9	28.2	22.6	*	120.9
PERSONS											
Working at time of survey—											
For one year or more	357.8	936.0	330.5	929.5	307.1	456.2	270.2	885.4	282.1	327.2	5,081.9
Less than one year—											
No previous job during the year	20.2	89.2	23.6	147.3	11.0	48.6	21.6	63.4	56.0	11.9	492.9
Had a previous job	34.7	124.0	71.8	194.1	48.0	114.1	38.6	137.1	82.8	39.4	884.5
Same industry(b)	18.5	67.2	48.5	126.5	27.3	72.9	17.2	95.8	48.3	24.0	546.2
Changed industry to(b)	16.3	56.7	23.3	67.5	20.6	41.2	21.4	41.3	34.5	15.4	338.3
Changed industry from(b)(c)	19.9	63.7	25.7	87.0	16.0	39.9	14.3	29.4	34.7	7.6	338.3
Not working at time of survey(c)	41.4	135.2	43.2	184.6	24.2	49.8	24.9	121.9	83.0	16.6	724.6
Began last job more than a year ago(c)	16.7	81.8	24.0	109.5	15.9	33.3	14.5	79.3	40.3	13.2	428.5
Currently looking for work(c)	4.5	38.3	15.1	33.3	5.9	10.7	*	12.4	10.1	*	137.0
Out of the labour force(c)	12.2	43.5	9.0	76.1	10.0	22.6	11.9	66.9	30.1	9.1	291.5
Began and left a job during the year(c)	24.7	53.3	19.2	75.1	8.3	16.5	10.4	42.5	42.7	*	296.1
Currently looking for work(c)	10.3	28.5	12.5	25.4	*	4.9	*	9.8	13.2	*	114.8
Out of the labour force(c)	14.4	24.8	6.7	49.6	*	11.5	6.3	32.7	29.6	*	181.3

(a) Industry of current job unless otherwise indicated. (b) Industry referred to A.S.I.C. divisions. (c) Industry of previous job in period.

TABLE 9. PERSONS WHO WORKED AT SOME TIME DURING THE YEAR ENDING FEBRUARY 1984 :
LABOUR MOBILITY AND MAJOR OCCUPATION GROUPS
(' 000)

	Occupation(a)							Total	
	Pro- fessional, technical, etc.	Adminis- trative, executive and managerial	Clerical	Sales	Farmers, fishermen, timber- getters, etc.	Transport and com- munication	Trades- men, etc.(b)		Service, sport and recreation
MALES									
Working at time of survey—									
For one year or more	472.2	309.1	259.5	186.8	302.8	232.8	1,298.2	177.3	3,238.6
Less than one year—									
No previous job during the year	15.5	7.5	19.3	26.2	18.3	7.3	99.2	17.9	211.2
Had a previous job	75.0	55.4	47.1	55.0	35.0	37.6	220.0	44.4	569.5
Same group	59.3	34.2	30.3	29.4	18.2	21.2	171.6	26.6	390.8
Changed group to	15.7	21.2	16.8	25.6	16.8	16.4	48.5	17.8	178.8
Changed group from(c)	2.9	21.5	16.1	26.9	16.9	14.9	49.8	19.8	178.8
Not working at time of survey(c)	11.4	17.3	17.0	31.0	30.3	21.1	167.0	28.0	333.2
Began last job more than a year ago(c)	6.7	15.8	11.3	19.9	11.8	15.1	93.7	14.6	199.1
Currently looking for work(c)	5.8	6.3	*	9.3	4.9	7.1	56.9	6.9	101.6
Out of the labour force(c)	0.9	9.5	7.0	10.6	6.9	8.0	36.8	7.7	97.5
Began and left a job during the year(c)	4.6	*	5.7	11.1	18.5	6.0	73.3	13.4	134.2
Currently looking for work(c)	*	*	*	*	10.1	*	46.2	5.4	73.8
Out of the labour force(c)	*	*	*	7.6	8.4	*	27.2	8.0	60.4
FEMALES									
Working at time of survey—									
For one year or more	342.2	49.2	653.8	216.4	92.9	38.4	163.1	287.3	1,843.3
Less than one year—									
No previous job during the year	30.9	*	87.6	57.9	10.4	*	28.9	57.3	281.7
Had a previous job	64.5	5.3	120.6	45.7	7.4	*	19.6	47.7	314.9
Same group	49.6	*	96.1	26.2	*	*	9.7	29.0	217.8
Changed group to	14.9	*	24.5	19.5	*	*	9.9	18.8	97.1
Changed group from(c)	9.7	5.8	21.8	22.6	*	*	7.7	21.6	97.1
Not working at time of survey(c)	59.2	6.0	110.3	70.5	18.0	6.8	39.2	81.5	391.4
Began last job more than a year ago(c)	39.8	4.9	70.9	38.4	8.5	*	21.5	41.3	229.4
Currently looking for work(c)	*	*	11.9	6.5	*	*	5.3	5.8	35.5
Out of the labour force(c)	35.7	*	59.0	31.9	8.2	*	16.2	35.6	193.9
Began and left a job during the year(c)	19.5	*	39.4	32.1	9.5	*	17.7	40.1	162.0
Currently looking for work(c)	*	*	10.9	7.5	*	*	6.3	10.5	41.0
Out of the labour force(c)	16.2	*	28.5	24.6	8.3	*	11.4	29.6	120.9
PERSONS									
Working at time of survey—									
For one year or more	814.4	358.3	913.3	403.2	395.7	271.2	1,461.3	464.6	5,081.9
Less than one year—									
No previous job during the year	46.3	12.0	106.8	84.1	28.6	11.7	128.1	75.1	492.9
Had a previous job	139.5	60.7	167.7	100.7	42.3	41.7	239.6	92.1	884.5
Same group	108.9	35.9	126.4	55.6	21.2	23.8	181.3	55.5	608.6
Changed group to	30.6	24.8	41.4	45.1	21.2	17.9	58.3	36.6	275.9
Changed group from(c)	22.6	27.3	37.9	49.6	21.1	18.5	57.5	41.5	275.9
Not working at time of survey(c)	80.6	23.4	127.3	101.5	48.4	27.9	206.2	109.5	724.6
Began last job more than a year ago(c)	56.5	20.7	82.1	58.3	20.4	19.3	115.2	56.0	428.5
Currently looking for work(c)	9.9	7.7	16.2	15.8	5.3	7.4	62.2	12.7	137.0
Out of the labour force(c)	46.6	13.0	66.0	42.5	15.1	11.9	53.0	43.3	291.5
Began and left a job during the year(c)	24.1	*	45.1	43.1	28.0	8.7	91.0	53.5	296.1
Currently looking for work(c)	5.3	*	12.4	11.0	11.3	5.2	52.4	15.8	114.8
Out of the labour force(c)	18.8	*	32.7	32.2	16.7	*	38.6	37.6	181.3

(a) Occupation of current job unless otherwise indicated. (b) Includes miners and quarry workers, etc., tradesmen, production-process workers and labourers, n.e.c. (c) Occupation of previous job in period.

**TABLE 10. PERSONS WHO LEFT A JOB DURING THE YEAR ENDING FEBRUARY 1984:
REASON FOR LEAVING AND INDUSTRY OF JOB LEFT**
(' 000)

Reason for leaving job	Industry of job left										Total
	Agric- culture	Manu- facturing	Constr- uction	Wholesale and retail trade	Transport and storage	Finance, property and business services	Public admin- istration and defence	Com- munity and other services	Recre- ation, personal and other services	Other	
Business changed location(a)	*	13.2	7.7	14.5	*	8.8	*	*	*	*	58.1
Better business or job(b)	10.5	35.9	14.2	72.1	12.7	30.7	8.9	26.3	33.4	*	247.4
Promotion or transfer(c)	*	7.0	5.0	18.7	10.1	31.3	9.2	31.5	*	17.6	134.6
Business closed	*	17.0	9.1	26.3	5.1	5.6	*	*	7.6	*	78.3
Laid off: no work	12.5	67.2	40.5	48.0	5.8	14.0	*	16.3	16.2	*	227.5
Laid off: other reasons	*	24.4	*	35.9	*	4.7	*	7.9	13.2	*	99.6
Fixed term job(d)	4.5	11.3	11.5	16.7	*	8.5	10.2	39.4	11.0	*	116.5
Holiday or seasonal work	24.5	12.4	*	19.8	*	*	*	9.1	10.7	*	86.9
Unsatisfactory conditions(e)	4.6	16.9	*	29.7	*	12.7	*	9.3	19.4	*	103.0
Wanted a change	*	5.7	*	17.0	*	5.4	*	11.3	6.7	*	54.9
Study	*	4.6	*	16.6	*	*	*	5.6	6.5	*	41.6
Own health or medical reasons	*	15.7	*	14.6	*	*	*	13.6	9.8	*	72.0
Retired	*	12.9	*	11.1	4.9	4.6	4.6	15.4	*	*	66.3
Personal or family reasons	4.5	15.9	6.7	40.4	5.5	19.9	6.6	41.7	20.4	*	165.9
Other reasons	*	6.0	4.6	16.7	*	5.0	*	11.8	*	*	56.5
Total	79.8	266.1	117.5	398.1	67.5	162.6	56.4	247.1	166.0	48.1	1,609.1
Males	56.1	188.6	109.1	208.5	54.0	80.8	31.8	71.4	64.9	37.5	902.8
Females	23.6	77.5	8.3	189.7	13.5	81.8	24.6	175.6	101.1	10.6	706.3

(a) Includes home operators who changed residence. (b) Includes starting own business. (c) Includes secondment or transfer as a relief worker. (d) Duration of employment was fixed on hiring and has expired. (e) Includes work conditions, transport difficulties, unsuitable hours, etc.

**TABLE 11. PERSONS WHO LEFT A JOB DURING THE YEAR ENDED FEBRUARY 1984:
REASON FOR LEAVING AND OCCUPATION OF JOB LEFT**
(' 000)

Reason for leaving job	Occupation of job left								Total
	Pro- fessional, technical, etc.	Adminis- trative, executive and managerial	Clerical	Sales	Farmers, fishermen, timber- getters etc.	Transport and communi- cation	Tradesmen etc.(f)	Service, sport and recreation	
Business changed location(a)	8.1	6.9	12.9	6.9	*	*	17.1	*	58.1
Better business or job(b)	30.6	15.9	45.1	38.8	11.7	10.9	59.9	34.5	247.4
Promotion or transfer(c)	32.1	14.2	41.1	6.7	*	8.0	20.1	11.4	134.6
Business closed	*	9.3	9.2	12.5	*	*	29.3	6.9	78.3
Laid off: no work	15.4	*	26.3	21.7	13.8	7.4	118.0	21.0	227.5
Laid off: other reasons	4.8	4.9	13.1	19.0	*	5.1	35.1	14.4	99.6
Fixed term job(d)	28.1	*	26.8	7.5	6.7	*	26.9	16.6	116.5
Holiday or seasonal work	5.0	*	7.1	13.4	25.0	*	21.5	11.8	86.9
Unsatisfactory conditions(e)	8.1	6.1	16.4	17.6	5.4	6.3	22.5	20.6	103.0
Wanted a change	12.0	5.0	7.8	9.2	*	*	9.4	6.4	54.9
Study	*	*	9.3	11.0	*	*	7.4	7.5	41.6
Own health or medical reasons	9.5	*	10.2	5.7	*	*	23.8	13.4	72.0
Retired	9.5	7.0	13.6	4.7	*	*	18.0	6.5	66.3
Personal or family reasons	30.2	5.4	44.8	23.7	5.0	5.6	25.0	26.2	165.9
Other reasons	10.8	5.0	7.9	8.2	*	*	11.0	6.2	56.5
Total	212.0	86.6	291.5	206.6	90.6	70.3	445.0	206.4	1,609.1
Males	93.5	73.0	63.4	87.4	65.4	57.2	388.4	74.4	902.8
Females	118.5	13.6	228.1	119.2	25.2	13.0	56.6	132.0	706.3

For footnotes (a) to (e) see previous table. (f) Includes miners and quarry workers, etc., tradesmen, production-process workers and labourers, n.e.c.

**TABLE 12. PERSONS WHO LEFT A JOB DURING THE YEAR ENDING FEBRUARY 1984:
REASON FOR LEAVING AND FAMILY STATUS
(' 000)**

Reason for leaving job	Family status									Total
	Member of a family						Not a member of a family			
	Husband or wife			Not married family head	Child of family head	Total (incl. other relatives)	Not living alone	living alone	Not family coded	
	With children 0-14 present	Without children 0-14 present	Total							
MALES										
Business changed location(a)	16.7	10.3	27.0	*	*	32.7	*	*	*	39.3
Better business or job(b)	58.0	29.7	87.7	*	33.7	125.1	14.3	8.2	8.0	155.5
Promotion or transfer(c)	38.6	23.3	61.9	*	13.4	77.7	9.3	6.2	6.5	99.7
Business closed	20.2	15.5	35.7	*	8.9	46.3	*	*	*	55.1
Laid off: no work	42.3	33.0	75.3	*	45.1	125.0	14.6	7.2	6.1	152.9
Laid off: other reasons	14.7	7.5	22.2	*	21.6	46.4	8.8	*	*	60.8
Fixed term job(d)	9.0	10.0	19.1	*	14.9	35.0	6.7	*	*	47.1
Holiday or seasonal work	6.4	*	10.3	*	24.0	36.7	*	*	*	45.0
Unsatisfactory conditions(e)	13.7	8.9	22.5	*	15.6	40.9	6.5	*	*	50.8
Wanted a change	11.8	5.7	17.5	*	4.8	22.5	4.5	*	*	32.2
Study	*	*	*	*	13.3	14.2	*	*	*	18.5
Own health or medical reasons	8.5	11.0	19.5	*	5.7	26.3	*	*	*	31.6
Retired	*	36.0	37.1	*	*	37.3	*	*	*	42.5
Personal or family reasons	14.2	10.3	24.5	*	8.0	34.0	*	*	*	42.2
Other reasons	11.9	7.9	19.7	*	*	23.9	*	*	*	29.7
Total	267.0	213.4	480.3	11.4	216.6	724.0	86.9	52.3	39.6	902.8
FEMALES										
Business changed location(a)	6.2	6.4	12.6	*	*	15.5	*	*	*	18.8
Better business or job(b)	18.1	16.3	34.3	4.7	26.5	67.9	12.5	6.3	5.2	91.9
Promotion or transfer(c)	5.8	8.4	14.2	*	7.6	25.0	*	*	*	34.9
Business closed	8.2	6.2	14.4	*	*	19.7	*	*	*	23.2
Laid off: no work	23.9	13.1	36.9	6.1	16.0	59.9	6.0	*	4.6	74.6
Laid off: other reasons	7.9	6.5	14.4	*	13.9	32.2	*	*	*	38.8
Fixed term job(d)	28.5	13.6	42.1	5.3	11.2	58.7	4.9	*	*	69.4
Holiday or seasonal work	11.2	7.6	18.8	*	13.9	34.5	*	*	*	41.9
Unsatisfactory conditions(e)	11.4	11.9	23.2	*	10.8	38.6	9.2	*	*	52.2
Wanted a change	5.6	5.0	10.6	*	*	15.2	5.0	*	*	22.8
Study	*	*	*	*	14.4	18.4	*	*	*	23.1
Own health or medical reasons	17.5	7.4	24.9	*	*	33.6	*	*	*	40.5
Retired	*	16.3	17.5	*	*	19.0	*	*	*	23.8
Personal or family reasons	57.8	31.7	89.5	9.1	7.9	107.2	6.2	*	8.5	123.7
Other reasons	11.1	6.0	17.0	*	*	23.2	*	*	*	26.8
Total	215.3	158.1	373.4	49.1	137.1	568.5	68.0	35.3	34.5	706.3
PERSONS										
Business changed location(a)	22.9	16.7	39.6	*	5.8	48.1	5.8	*	*	58.1
Better business or job(b)	76.0	46.0	122.0	6.0	60.2	193.0	26.7	14.5	13.2	247.4
Promotion or transfer(c)	44.3	31.7	76.1	*	21.1	102.8	13.2	10.5	8.1	134.6
Business closed	28.4	21.8	50.1	*	12.1	65.9	5.6	*	*	78.3
Laid off: no work	66.1	46.1	112.2	7.6	61.1	184.9	20.6	11.4	10.7	227.5
Laid off: other reasons	22.6	14.0	36.6	*	35.5	78.6	12.7	5.8	*	99.6
Fixed term job(d)	37.5	23.7	61.2	6.2	26.1	93.8	11.6	6.3	4.8	116.5
Holiday or seasonal work	17.7	11.5	29.1	*	37.9	71.2	8.1	*	5.4	86.9
Unsatisfactory conditions(e)	25.0	20.7	45.8	4.5	26.3	79.4	15.8	4.7	*	103.0
Wanted a change	17.4	10.7	28.1	*	7.5	37.7	9.4	5.0	*	54.9
Study	*	*	*	*	27.6	32.7	4.6	*	*	41.6
Own health or medical reasons	26.0	18.5	44.4	4.6	9.6	59.9	5.2	4.8	*	72.0
Retired	*	52.3	54.6	*	*	56.3	*	8.0	*	66.3
Personal or family reasons	71.9	42.1	114.0	9.9	15.9	141.2	9.3	*	12.0	165.9
Other reasons	22.9	13.8	36.8	*	6.3	47.1	5.1	*	*	56.5
Total	482.3	371.5	853.8	60.5	353.7	1,292.5	154.9	87.6	74.1	1,609.1

For footnotes (a) to (e) see Table 10.

**TABLE 13. PERSONS WHO LEFT A JOB DURING THE YEAR ENDING FEBRUARY 1984:
REASON FOR LEAVING AND DURATION OF JOB LEFT
(' 000)**

Reason for leaving job	Duration of job left									Total
	Under 3 months	3 and under 6 months	6 and under 12 months	Total under 1 year	1 and under 2 years	2 and under 3 years	3 and under 5 years	5 and under 10 years	10 years and over	
MALES										
Business changed location(a)	*	*	*	9.6	5.9	4.6	7.7	6.7	4.9	39.3
Better business or job(b)	21.8	14.5	25.3	61.6	29.4	19.5	19.1	18.6	7.2	155.5
Promotion or transfer(c)	13.4	7.0	15.3	35.6	20.3	13.6	14.9	11.2	*	99.7
Business closed	5.9	*	6.9	16.8	6.9	6.1	9.2	7.5	8.5	55.1
Laid off: no work	46.6	21.0	19.3	86.9	16.1	15.8	15.5	9.2	9.4	152.9
Laid off: other reasons	11.6	8.9	10.7	31.3	7.9	5.0	6.5	*	6.2	60.8
Fixed term job(d)	27.8	6.9	5.5	40.1	*	*	*	*	*	47.1
Holiday or seasonal work	28.3	7.3	*	39.7	*	*	*	*	*	45.0
Unsatisfactory conditions(e)	13.4	7.0	9.0	29.5	7.3	*	5.7	*	*	50.8
Wanted a change	*	*	*	6.0	5.5	5.0	8.7	4.7	*	32.2
Study	12.0	*	*	15.1	*	*	*	*	*	18.5
Own health or medical reasons	5.5	*	*	10.6	*	*	*	*	8.1	31.6
Retired	*	*	*	*	*	*	*	5.3	31.7	42.5
Personal or family reasons	5.1	5.1	*	14.5	7.4	5.9	7.4	4.6	*	42.2
Other reasons	*	*	*	9.5	*	4.8	4.5	*	*	29.7
Total	200.2	93.4	115.2	408.8	120.3	92.4	105.6	84.5	91.1	902.8
FEMALES										
Business changed location(a)	*	*	*	4.7	*	*	*	*	*	18.8
Better business or job(b)	13.6	11.7	16.2	41.5	20.2	13.4	8.9	6.9	*	91.9
Promotion or transfer(c)	8.9	*	*	14.6	7.5	*	4.7	*	*	34.9
Business closed	*	*	4.5	7.8	*	*	4.9	*	*	23.2
Laid off: no work	22.7	10.2	12.5	45.4	7.3	6.0	8.1	5.0	*	74.6
Laid off: other reasons	10.1	5.1	6.4	21.6	4.9	5.9	*	*	*	38.8
Fixed term job(d)	48.8	9.8	5.1	63.8	*	*	*	*	*	69.4
Holiday or seasonal work	27.5	5.0	*	35.5	*	*	*	*	*	41.9
Unsatisfactory conditions(e)	14.7	8.0	7.2	30.0	10.8	*	*	*	*	52.2
Wanted a change	*	*	*	4.7	4.5	*	*	*	*	22.8
Study	9.2	*	5.1	16.0	*	*	*	*	*	23.1
Own health or medical reasons	6.7	*	6.6	15.9	5.8	6.0	5.1	5.5	*	40.5
Retired	*	*	*	*	*	*	*	5.2	12.1	23.8
Personal or family reasons	19.4	13.4	16.6	49.4	20.4	13.9	17.1	15.1	7.7	123.7
Other reasons	*	*	*	10.2	*	*	5.3	*	*	26.8
Total	191.6	75.2	95.4	362.2	96.5	70.8	75.8	64.8	36.3	706.3
PERSONS										
Business changed location(a)	4.6	*	6.3	14.3	8.9	6.6	11.4	9.8	7.1	58.1
Better business or job(b)	35.4	26.2	41.5	103.1	49.6	32.9	28.0	25.5	8.2	247.4
Promotion or transfer(c)	22.2	9.3	18.7	50.2	27.9	17.9	19.6	14.6	*	134.6
Business closed	7.9	5.3	11.4	24.6	9.9	8.6	14.1	11.2	9.9	78.3
Laid off: no work	69.3	31.2	31.8	132.3	23.4	21.8	23.7	14.2	12.1	227.5
Laid off: other reasons	21.7	14.0	17.1	52.9	12.8	10.9	9.9	6.3	6.8	99.6
Fixed term job(d)	76.6	16.7	10.6	103.9	*	*	*	*	*	116.5
Holiday or seasonal work	55.9	12.3	7.0	75.2	*	*	*	*	*	86.9
Unsatisfactory conditions(e)	28.0	15.1	16.3	59.4	18.1	7.5	8.9	6.3	*	103.0
Wanted a change	*	*	5.0	10.7	10.0	8.6	12.7	9.0	*	54.9
Study	21.1	*	6.5	31.2	*	4.5	*	*	*	41.6
Own health or medical reasons	12.2	*	10.0	26.5	9.5	8.4	7.8	9.6	10.2	72.0
Retired	*	*	*	*	*	*	4.6	10.5	43.9	66.3
Personal or family reasons	24.4	18.5	20.9	63.8	27.8	19.8	24.5	19.7	10.2	165.9
Other reasons	8.2	4.7	6.8	19.7	6.7	8.8	9.8	7.3	*	56.5
Total	391.8	168.6	210.6	771.0	216.8	163.2	181.4	149.3	127.4	1,609.1

For footnotes(a) to (e) see Table 10.

**TABLE 14. PERSONS WHO LEFT A JOB DURING THE YEAR ENDING FEBRUARY 1984:
REASON FOR LEAVING, STATUS OF WORKER IN JOB LEFT AND LABOUR FORCE STATUS AT FEBRUARY 1984**

Reason for leaving job	Status of worker in job left		Labour force status at February 1984				Total	Proportion of total (per cent)
	Wage or salary earner	Other	Working	Looking for work	Total in the labour force	Out of the labour force		
— 000 —								
MALES								
Business changed location(a)	29.4	9.9	39.3	*	39.3	*	39.3	4.4
Better business or job(b)	139.8	15.7	146.8	4.7	151.5	*	155.5	17.2
Promotion or transfer(c)	99.4	*	99.7	*	99.7	*	99.7	11.0
Business closed	40.2	14.9	34.7	15.1	49.8	5.3	55.1	6.1
Laid off: no work	145.3	7.6	71.0	63.9	135.0	18.0	152.9	16.9
Laid off: other reasons	59.6	*	24.2	29.7	53.9	6.9	60.8	6.7
Fixed term job(d)	44.2	*	20.8	13.7	34.6	12.5	47.1	5.2
Holiday or seasonal work	41.5	*	12.5	8.9	21.4	23.5	45.0	5.0
Unsatisfactory conditions(e)	46.5	*	31.1	13.7	44.8	6.0	50.8	5.6
Wanted a change	24.7	7.4	25.4	*	28.5	*	32.2	3.6
Study	17.9	*	*	*	5.5	13.0	18.5	2.0
Own health or medical reasons	25.4	6.1	6.6	6.3	12.9	18.6	31.6	3.5
Retired	38.1	*	*	*	*	38.3	42.5	4.7
Personal or family reasons	34.6	7.7	28.4	9.7	38.1	*	42.2	4.7
Other reasons	20.4	9.3	22.1	*	25.7	*	29.7	3.3
Total	806.9	95.8	569.5	175.3	744.9	157.9	902.8	100.0
FEMALES								
Business changed location(a)	14.1	4.7	18.8	*	18.8	*	18.8	2.7
Better business or job(b)	86.7	5.2	88.6	*	90.5	*	91.9	13.0
Promotion or transfer(c)	34.9	*	34.9	*	34.9	*	34.9	4.9
Business closed	18.2	5.1	11.8	*	14.1	9.1	23.2	3.3
Laid off: no work	72.1	*	24.3	18.3	42.6	32.0	74.6	10.6
Laid off: other reasons	38.5	*	14.6	10.2	24.7	14.1	38.8	5.5
Fixed term job(d)	67.7	*	17.7	9.8	27.4	42.0	69.4	9.8
Holiday or seasonal work	39.0	*	9.2	*	13.5	28.5	41.9	5.9
Unsatisfactory conditions(e)	49.9	*	26.1	9.8	36.0	16.2	52.2	7.4
Wanted a change	20.7	*	15.0	*	17.1	5.6	22.8	3.2
Study	22.5	*	4.9	*	7.6	15.5	23.1	3.3
Own health or medical reasons	37.2	*	4.7	*	8.6	31.8	40.5	5.7
Retired	20.6	*	*	*	*	22.9	23.8	3.4
Personal or family reasons	114.5	9.2	29.7	9.4	39.1	84.5	123.7	17.5
Other reasons	22.1	4.7	14.0	*	15.5	11.3	26.8	3.8
Total	658.6	47.7	314.9	76.5	391.4	314.9	706.3	100.0
PERSONS								
Business changed location(a)	43.5	14.6	58.1	*	58.1	*	58.1	3.6
Better business or job(b)	226.5	20.9	235.4	6.6	242.1	5.3	247.4	15.4
Promotion or transfer(c)	134.3	*	134.6	*	134.6	*	134.6	8.4
Business closed	58.3	20.0	46.4	17.5	63.9	14.4	78.3	4.9
Laid off: no work	217.4	10.1	95.4	82.2	177.5	50.0	227.5	14.1
Laid off: other reasons	98.1	*	38.8	39.8	78.6	20.9	99.6	6.2
Fixed term job(d)	111.8	4.7	38.5	23.5	62.0	54.5	116.5	7.2
Holiday or seasonal work	80.5	6.4	21.7	13.2	34.9	52.0	86.9	5.4
Unsatisfactory conditions(e)	96.4	6.6	57.2	23.5	80.8	22.3	103.0	6.4
Wanted a change	45.4	9.5	40.4	5.2	45.6	9.4	54.9	3.4
Study	40.4	*	9.3	*	13.1	28.5	41.6	2.6
Own health or medical reasons	62.7	9.4	11.3	10.2	21.5	50.5	72.0	4.5
Retired	58.7	7.6	*	*	5.1	61.2	66.3	4.1
Personal or family reasons	149.0	16.9	58.1	19.2	77.2	88.7	165.9	10.3
Other reasons	42.4	14.1	36.0	5.2	41.3	15.2	56.5	3.5
Total	1,465.5	143.6	884.5	251.8	1,136.3	472.8	1,609.1	100.0

For footnotes (a) to (e) see Table 10.

**TABLE 15. PERSONS WHO LEFT A JOB DURING THE YEAR ENDING FEBRUARY 1984:
REASON FOR LEAVING, MARITAL STATUS AND AGE
(' 000)**

Reason for leaving job	Age group (years)							Total
	Married	Not married	15-24	25-34	35-44	45-54	55 and over	
MALES								
Business changed location(a)	27.5	11.8	6.2	12.0	12.1	5.9	*	39.3
Better business or job(b)	90.7	64.7	51.4	61.0	29.0	12.0	*	155.5
Promotion or transfer(c)	64.6	35.1	25.4	36.9	23.9	10.2	*	99.7
Business closed	35.9	19.1	12.6	15.0	13.2	9.4	4.9	55.1
Laid off: no work	76.6	76.3	60.1	42.6	20.3	15.7	14.3	152.9
Laid off: other reasons	22.7	38.1	31.1	12.9	7.6	5.6	*	60.8
Fixed term job(d)	19.4	27.7	19.7	14.0	4.8	*	5.2	47.1
Holiday or seasonal work	10.9	34.1	29.1	7.3	6.1	*	*	45.0
Unsatisfactory conditions(e)	22.9	27.9	22.7	16.2	6.9	*	*	50.8
Wanted a change	17.6	14.6	9.2	12.1	7.4	*	*	32.2
Study	*	18.2	17.6	*	*	*	*	18.5
Own health or medical reasons	20.0	11.6	6.1	6.0	5.4	5.2	8.9	31.6
Retired	37.4	5.1	*	*	*	*	39.7	42.5
Personal or family reasons	25.3	16.9	12.5	14.1	9.2	*	*	42.2
Other reasons	20.0	9.8	6.8	9.6	7.8	*	*	29.7
Total	491.7	411.0	310.5	260.5	151.5	86.7	93.6	902.8
FEMALES								
Business changed location(a)	12.6	6.2	4.7	5.6	7.7	*	*	18.8
Better business or job(b)	35.7	56.2	47.9	24.9	15.3	*	*	91.9
Promotion or transfer(c)	14.7	20.2	15.3	11.0	6.3	*	*	34.9
Business closed	14.9	8.3	6.3	6.3	6.9	*	*	23.2
Laid off: no work	39.6	35.0	28.8	19.9	17.3	6.1	*	74.6
Laid off: other reasons	14.6	24.2	22.4	9.0	6.9	*	*	38.8
Fixed term job(d)	43.5	25.9	21.8	21.2	17.0	6.2	*	69.4
Holiday or seasonal work	19.5	22.5	21.3	8.5	6.6	*	*	41.9
Unsatisfactory conditions(e)	24.1	28.1	24.9	15.2	7.4	*	*	52.2
Wanted a change	10.7	12.0	8.3	7.5	4.7	*	*	22.8
Study	*	20.2	18.7	*	*	*	*	23.1
Own health or medical reasons	25.7	14.8	10.3	16.5	6.6	5.2	*	40.5
Retired	17.6	6.2	*	*	*	4.6	17.9	23.8
Personal or family reasons	96.0	27.7	39.1	51.9	20.5	8.5	*	123.7
Other reasons	17.5	9.3	5.0	10.4	7.6	*	*	26.8
Total	389.7	316.7	274.8	212.4	125.5	57.5	36.1	706.3
PERSONS								
Business changed location(a)	40.1	18.0	10.9	17.6	16.2	9.5	*	58.1
Better business or job(b)	126.4	121.0	99.3	85.9	44.3	15.6	*	247.4
Promotion or transfer(c)	79.4	55.3	40.7	47.9	30.2	12.2	*	134.6
Business closed	50.9	27.4	19.0	21.3	20.1	12.2	5.8	78.3
Laid off: no work	116.2	111.3	88.9	62.5	37.6	21.8	16.7	227.5
Laid off: other reasons	37.3	62.2	53.5	21.9	12.0	8.0	*	99.6
Fixed term job(d)	62.8	53.6	41.4	35.2	21.8	9.7	8.3	116.5
Holiday or seasonal work	30.3	56.6	50.3	15.8	9.7	6.5	4.6	86.9
Unsatisfactory conditions(e)	47.0	56.0	47.6	31.4	14.3	7.1	*	103.0
Wanted a change	28.3	26.6	17.6	19.6	12.1	5.0	*	54.9
Study	*	38.4	36.3	4.6	*	*	*	41.6
Own health or medical reasons	45.7	26.4	16.4	22.4	11.9	10.4	10.8	72.0
Retired	55.1	11.2	*	*	*	6.5	57.6	66.3
Personal or family reasons	121.3	44.6	51.6	66.0	29.6	12.8	5.9	165.9
Other reasons	37.5	19.0	11.8	20.0	15.4	6.7	*	56.5
Total	881.4	727.7	585.3	472.9	277.0	144.2	129.7	1,609.1

For footnotes (a) to (e) see Table 10.

**TABLE 16. PERSONS WHO LEFT A JOB DURING THE YEAR ENDING FEBRUARY 1984:
DURATION OF JOB LEFT AND AGE
(* 000)**

Duration of job left	Age group (years)								Total
	15-19	20-24	25-34	35-44	45-54	55-59	60-64	65 and over	
MALES									
Under 3 months	66.0	49.4	42.8	21.9	10.6	*	*	*	200.2
3 and under 6 months	17.1	23.8	30.7	11.7	7.0	*	*	*	93.4
6 and under 12 months	19.2	23.7	43.2	15.1	9.9	*	*	*	115.2
Total under 1 year	102.3	96.9	116.7	48.7	27.5	8.0	4.6	*	408.8
1 and under 2 years	16.2	27.5	40.0	21.0	10.3	*	*	*	120.3
2 and under 3 years	8.2	19.7	31.9	20.0	7.4	*	*	*	92.4
3 and under 5 years	6.5	23.2	32.3	24.7	11.0	5.8	*	*	105.6
5 and under 10 years	..	10.1	28.9	22.2	11.1	5.0	5.0	*	84.5
10 years and over	10.7	14.8	19.4	13.0	20.1	13.1	91.1
Total	133.2	177.4	260.5	151.5	86.7	36.7	35.4	21.6	902.8
MARRIED FEMALES									
Under 3 months	*	15.6	40.5	24.6	9.9	*	*	*	95.6
3 and under 6 months	*	5.9	13.2	9.9	*	*	*	*	32.4
6 and under 12 months	*	9.8	20.1	11.1	*	*	*	*	44.7
Total under 1 year	*	31.3	73.8	45.6	14.5	*	*	*	172.7
1 and under 2 years	*	12.8	16.8	11.1	4.7	*	*	*	47.9
2 and under 3 years	*	6.6	18.7	12.3	*	*	*	*	42.9
3 and under 5 years	*	8.9	17.4	13.9	5.8	*	*	*	50.6
5 and under 10 years	..	*	18.9	13.0	9.3	*	*	*	49.8
10 years and over	4.8	*	7.0	4.6	*	*	25.7
Total	5.6	64.1	150.4	100.2	45.3	13.2	8.4	*	389.7
ALL FEMALES									
Under 3 months	51.2	39.0	53.1	31.1	12.5	*	*	*	191.6
3 and under 6 months	17.1	20.1	21.2	12.7	*	*	*	*	75.2
6 and under 12 months	19.5	27.1	30.6	13.8	*	*	*	*	95.4
Total under 1 year	87.8	86.2	104.9	57.5	19.6	*	*	*	362.2
1 and under 2 years	16.5	27.3	28.9	15.4	6.0	*	*	*	96.5
2 and under 3 years	7.3	17.9	24.8	14.0	5.6	*	*	*	70.8
3 and under 5 years	5.2	17.5	25.2	16.6	6.8	*	*	*	75.8
5 and under 10 years	..	9.1	22.7	16.2	10.6	*	*	*	64.8
10 years and over	5.9	5.9	8.9	7.4	5.7	*	36.3
Total	116.8	158.0	212.4	125.5	57.5	18.5	12.3	5.4	706.3
PERSONS									
Under 3 months	117.2	88.4	95.9	53.0	23.1	6.9	*	*	391.8
3 and under 6 months	34.2	43.9	51.8	24.3	10.5	*	*	*	168.6
6 and under 12 months	38.7	50.8	73.9	28.8	13.5	*	*	*	210.6
Total under 1 year	190.1	183.1	221.5	106.2	47.1	11.3	6.4	5.2	771.0
1 and under 2 years	32.6	54.8	68.9	36.5	16.3	*	*	*	216.8
2 and under 3 years	15.5	37.6	56.7	34.0	13.0	*	*	*	163.2
3 and under 5 years	11.7	40.6	57.5	41.3	17.9	9.4	*	*	181.4
5 and under 10 years	..	19.2	51.6	38.4	21.7	7.1	8.3	*	149.3
10 years and over	16.6	20.7	28.2	20.4	25.7	15.8	127.4
Total	249.9	335.3	472.9	277.0	144.2	55.1	47.6	27.0	1,609.1

**TABLE 17. PERSONS WHO LEFT A JOB DURING THE YEAR ENDING FEBRUARY 1984:
DURATION OF JOB LEFT AND EDUCATIONAL ATTAINMENT
(' 000)**

Duration of job left	With post-school qualifications			Attended highest secondary level	Without post-school qualifications			Total (c)
	Degree or equivalent	Trade, technical level	Total (a)		Did not attend highest level of secondary school and left at age (years)			
					16 or over	15 or under	Total (b)	
MALES								
Under 3 months	11.4	53.4	66.1	32.9	29.3	49.3	78.9	200.2
3 and under 6 months	5.7	31.3	37.7	10.9	19.1	23.1	42.2	93.4
6 and under 12 months	9.8	37.9	48.7	16.5	17.5	30.5	48.0	115.2
<i>Total under 1 year</i>	<i>26.9</i>	<i>122.6</i>	<i>152.5</i>	<i>60.3</i>	<i>65.8</i>	<i>103.0</i>	<i>169.1</i>	<i>408.8</i>
1 and under 2 years	10.1	41.0	52.5	19.1	21.0	25.0	46.5	120.3
2 and under 3 years	12.8	29.9	43.1	11.2	15.5	20.6	36.2	92.4
3 and under 5 years	15.7	40.8	57.8	11.5	13.1	22.5	35.6	105.6
5 and under 10 years	10.5	36.6	47.9	6.9	8.5	20.9	29.7	84.5
10 years and over	7.3	35.4	43.4	6.5	5.0	35.9	41.3	91.1
<i>Total</i>	<i>83.3</i>	<i>306.4</i>	<i>397.0</i>	<i>115.4</i>	<i>129.0</i>	<i>227.9</i>	<i>358.4</i>	<i>902.8</i>
FEMALES								
Under 3 months	12.3	55.8	70.6	33.8	28.9	46.1	75.0	191.6
3 and under 6 months	6.8	19.9	27.3	9.3	17.7	17.9	35.6	75.2
6 and under 12 months	8.6	29.4	38.6	11.9	17.7	24.9	42.5	95.4
<i>Total under 1 year</i>	<i>27.7</i>	<i>105.2</i>	<i>136.4</i>	<i>55.0</i>	<i>64.2</i>	<i>88.9</i>	<i>153.1</i>	<i>362.2</i>
1 and under 2 years	7.3	34.9	43.3	13.9	16.3	22.1	38.4	96.5
2 and under 3 years	6.5	19.6	27.3	11.8	10.4	20.7	31.1	70.8
3 and under 5 years	5.5	29.1	35.9	7.2	12.6	19.4	32.1	75.8
5 and under 10 years	6.2	22.6	30.5	5.3	11.1	17.6	28.9	64.8
10 years and over	*	8.5	10.8	*	5.2	16.9	22.2	36.3
<i>Total</i>	<i>54.9</i>	<i>219.8</i>	<i>284.2</i>	<i>96.6</i>	<i>119.9</i>	<i>185.7</i>	<i>305.7</i>	<i>706.3</i>
PERSONS								
Under 3 months	23.8	109.2	136.6	66.7	58.2	95.4	153.9	391.8
3 and under 6 months	12.5	51.2	65.0	20.2	36.7	41.1	77.8	168.6
6 and under 12 months	18.4	67.4	87.2	28.5	35.1	55.4	90.5	210.6
<i>Total under 1 year</i>	<i>54.6</i>	<i>227.8</i>	<i>288.8</i>	<i>115.4</i>	<i>130.0</i>	<i>191.9</i>	<i>322.2</i>	<i>771.0</i>
1 and under 2 years	17.4	75.9	95.7	32.9	37.3	47.0	84.9	216.8
2 and under 3 years	19.4	49.5	70.4	23.0	25.9	41.3	67.3	163.2
3 and under 5 years	21.1	70.0	93.7	18.7	25.7	41.9	67.7	181.4
5 and under 10 years	16.7	59.2	78.4	12.2	19.7	38.6	58.6	149.3
10 years and over	9.0	43.9	54.2	9.8	10.3	52.9	63.4	127.4
<i>Total</i>	<i>138.2</i>	<i>526.2</i>	<i>681.2</i>	<i>212.1</i>	<i>248.8</i>	<i>413.6</i>	<i>664.1</i>	<i>1,609.1</i>

(a) Includes persons with other post-school qualifications. (b) Includes persons who never went to school. (c) Includes persons aged 15 to 20 years still at school.

TABLE 18. PERSONS WHO HAD A JOB AT FEBRUARY 1984 AND WHO CHANGED JOBS DURING THE YEAR ENDING FEBRUARY 1984: DURATION OF PREVIOUS JOB AND INDUSTRY OF CURRENT JOB ('000)

Duration of previous job	Industry of current job										Total
	Agriculture	Manufacturing	Construction	Wholesale and retail trade	Transport and storage	Finance, property and business services	Public administration and defence	Community services	Recreation, personal and other services	Other	
Under 3 months	9.6	22.7	18.3	36.2	7.5	16.8	7.9	23.4	17.0	8.5	168.0
3 and under 6 months	*	13.2	10.0	23.1	5.2	9.9	4.7	12.1	10.7	*	95.3
6 and under 12 months	6.4	17.5	8.8	29.9	5.8	14.8	7.2	18.3	11.5	6.6	126.8
Total under 1 year	18.3	53.5	37.1	89.2	18.5	41.6	19.8	53.9	39.1	19.2	390.2
1 and under 2 years	*	20.1	9.5	31.0	6.8	19.6	5.3	26.2	16.8	6.2	145.4
2 and under 3 years	*	12.4	7.4	22.5	5.7	16.1	*	16.6	10.4	4.6	101.8
3 and under 5 years	*	17.0	9.0	23.2	5.9	20.7	*	18.1	7.9	4.6	114.7
5 and under 10 years	*	11.5	5.9	19.6	6.6	11.1	4.5	15.7	5.5	*	87.4
10 years and over	*	9.4	*	8.6	*	5.0	*	6.6	*	*	45.1
Total	34.7	124.0	71.8	194.1	48.0	114.1	38.6	137.1	82.8	39.4	884.5

TABLE 19. PERSONS WHO HAD A JOB AT FEBRUARY 1984 AND WHO CHANGED JOBS DURING THE YEAR ENDING FEBRUARY 1984: DURATION OF PREVIOUS JOB AND OCCUPATION OF CURRENT JOB ('000)

Duration of previous job	Occupation of current job								Total	
	Professional, technical, etc.	Administrative, executive and managerial	Clerical	Sales	Farmers, fishermen, timber-getters, etc.	Transport and communication	Tradesmen, etc., (a)	Service, sport and recreation		
Under 3 months		21.0	4.6	31.5	22.9	13.5	6.2	50.9	17.4	168.0
3 and under 6 months		10.6	*	17.0	9.2	*	*	34.1	13.2	95.3
6 and under 12 months		19.7	6.6	24.5	15.1	6.9	5.4	35.6	13.1	126.8
Total under 1 year		51.3	14.2	73.0	47.3	24.2	15.9	120.6	43.6	390.2
1 and under 2 years		24.3	11.7	30.9	16.2	5.3	6.4	34.1	16.5	145.4
2 and under 3 years		19.1	6.8	21.5	12.0	*	4.8	22.6	11.7	101.8
3 and under 5 years		18.9	11.2	23.7	11.8	*	6.0	28.2	11.7	114.7
5 and under 10 years		18.4	9.7	14.1	9.0	*	4.5	22.4	6.2	87.4
10 years and over		7.5	7.0	4.6	*	*	*	11.8	*	45.1
Total		139.5	60.7	167.7	100.7	42.3	41.7	239.6	92.1	884.5

(a) Includes miners and quarry workers, etc., tradesmen, production-process workers and labourers, n.e.c.

TABLE 20. PERSONS WHO HAD A JOB AT FEBRUARY 1984 : DURATION OF CURRENT JOB AND AGE
(' 000)

Duration of current job	Age group (years)								Total
	15-19	20-24	25-34	35-44	45-54	55-59	60-64	65 and over	
MALES									
Under 3 months	89.6	72.1	93.0	50.6	28.2	7.2	*	*	344.4
3 and under 6 months	28.4	36.0	58.1	32.7	15.9	4.8	*	*	177.8
6 and under 12 months	32.5	49.4	90.3	49.5	26.7	6.7	*	*	258.5
Total under 1 year	150.5	157.4	241.3	132.8	70.8	18.7	7.3	*	780.7
1 and under 2 years	66.6	77.9	119.9	80.7	43.8	11.3	4.6	*	407.2
2 and under 3 years	52.6	78.8	158.8	94.2	44.3	13.0	7.5	*	452.6
3 and under 5 years	42.6	119.9	212.7	149.9	82.7	27.2	11.8	*	651.1
5 and under 10 years	*	79.1	231.6	206.6	148.2	57.0	25.2	7.6	755.6
10 years and over	..	*	140.6	258.3	306.0	148.6	77.4	41.1	972.2
Total	312.5	513.5	1,104.9	922.5	695.7	275.7	133.9	60.8	4,019.4
FEMALES									
Under 3 months	67.1	58.3	65.1	39.2	14.4	5.3	*	*	249.4
3 and under 6 months	32.9	30.8	38.8	23.6	9.1	*	*	*	136.8
6 and under 12 months	46.9	46.2	59.3	40.5	14.3	*	*	*	210.4
Total under 1 year	146.9	135.2	163.2	103.3	37.8	8.3	*	*	596.6
1 and under 2 years	66.0	72.5	95.8	66.8	29.8	5.8	*	*	339.0
2 and under 3 years	45.1	70.7	89.0	63.0	34.9	7.0	*	*	310.6
3 and under 5 years	27.5	94.8	118.8	101.9	55.1	12.3	4.2	*	415.9
5 and under 10 years	*	58.7	122.2	138.1	89.8	24.6	12.5	*	450.2
10 years and over	..	*	37.5	95.5	112.4	50.3	18.9	12.5	327.5
Total	286.1	432.4	626.4	568.7	359.6	105.5	42.4	18.8	2,439.9

TABLE 21. PERSONS WHO HAD A JOB AT FEBRUARY 1984: DURATION OF CURRENT JOB AND EDUCATIONAL ATTAINMENT
(' 000)

Duration of current job	Without post-school qualifications							Total (c)	
	With post-school qualifications			Attended highest secondary level	Did not attend highest level of secondary school and left at age (years)				
	Degree or equivalent	Trade, technical level	Total (a)		16 or over	15 or under	Total (b)		
MALES									
Under 3 months		37.1	99.0	137.8	63.4	57.3	73.2	130.5	344.4
3 and under 6 months		14.9	55.3	72.7	24.7	32.8	42.1	75.7	177.8
6 and under 12 months		26.5	102.4	131.5	33.7	37.2	50.2	87.7	258.5
Total under 1 year		78.4	256.8	342.0	121.9	127.3	165.5	293.8	780.7
1 and under 2 years		51.9	127.3	181.9	54.5	72.8	85.3	159.4	407.2
2 and under 3 years		50.5	151.5	206.8	63.6	78.0	98.8	177.3	452.6
3 and under 5 years		74.7	249.8	329.6	76.0	94.5	148.4	243.7	651.1
5 and under 10 years		80.3	293.7	379.6	70.2	90.2	213.5	305.8	755.6
10 years and over		89.5	352.6	448.2	69.6	83.7	368.2	454.5	972.2
Total		425.4	1,431.6	1,888.1	455.7	546.5	1,079.8	1,634.4	4,019.4
FEMALES									
Under 3 months		26.4	75.3	104.9	48.9	33.9	48.0	82.2	249.4
3 and under 6 months		8.3	39.2	48.5	18.4	25.8	37.0	62.8	136.8
6 and under 12 months		13.1	63.2	80.4	34.8	36.6	52.6	89.2	210.4
Total under 1 year		47.8	177.7	233.7	102.1	96.3	137.5	234.1	596.6
1 and under 2 years		32.2	100.1	136.9	52.0	58.9	76.9	136.7	339.0
2 and under 3 years		26.2	89.6	119.6	53.6	52.2	76.6	129.4	310.6
3 and under 5 years		31.9	133.4	170.9	53.0	73.6	115.8	189.7	415.9
5 and under 10 years		33.0	144.0	182.6	52.0	69.2	145.8	215.5	450.2
10 years and over		19.3	86.2	109.1	28.8	45.9	141.7	189.6	327.5
Total		190.5	731.0	952.9	341.6	396.1	694.3	1,095.2	2,439.9

(a) Includes persons with other post-school qualifications. (b) Includes persons who never went to school. (c) Includes persons aged 15 to 20 years still at school.

TABLE 22. PERSONS WHO HAD A JOB AT FEBRUARY 1984: DURATION OF CURRENT JOB AND INDUSTRY OF CURRENT JOB ('000)

Duration of current job	Industry of current job										Total
	Agri- culture	Manu- facturing	Const- ruction	Whole- sale and retail trade	Trans- port and storage	Finance, property and business services	Public administ- ration and defence	Com- munity services	Recre- ation, personal and other services	Other	
Under 3 months	31.1	84.3	47.6	127.5	25.0	68.3	25.3	98.4	61.1	25.2	593.8
3 and under 6 months	11.5	56.0	22.3	85.9	14.0	33.3	14.1	35.4	34.3	7.9	314.6
6 and under 12 months	12.4	72.9	25.7	128.1	19.9	60.7	20.8	66.9	43.5	18.1	468.9
Total under 1 year	55.0	213.2	95.5	341.5	58.9	162.3	60.2	200.7	138.8	51.3	1,377.3
1 and under 2 years	26.0	100.4	41.1	195.7	31.5	84.6	36.5	137.1	58.3	34.9	746.2
2 and under 3 years	22.8	143.7	46.8	160.9	38.8	92.1	33.5	133.2	51.1	40.5	763.2
3 and under 5 years	53.8	201.2	73.2	200.2	61.3	101.8	52.3	187.4	74.0	62.0	1,067.0
5 and under 10 years	70.4	233.2	77.3	202.9	77.1	98.8	74.3	242.9	58.6	70.4	1,205.8
10 years and over	184.8	257.5	92.2	169.8	98.5	78.9	73.6	184.9	40.0	119.5	1,299.8
Total	412.8	1,149.1	426.0	1,271.0	366.0	618.5	330.4	1,086.1	420.9	378.5	6,459.3

TABLE 23. PERSONS WHO HAD A JOB AT FEBRUARY 1984: DURATION OF CURRENT JOB AND OCCUPATION OF CURRENT JOB ('000)

Duration of current job	Occupation of current job								Total	
	Profess- ional, technical, etc.	Adminis- trative, executive and managerial	Clerical	Sales	Farmers, fishermen, timber- getters, etc.	Transport and commu- nication	Trades- men, etc., (a)	Service, sport and recreation		
Under 3 months		92.6	24.7	109.4	70.3	38.4	19.2	166.0	73.3	593.8
3 and under 6 months		30.9	13.7	64.3	47.4	14.2	14.4	86.2	43.4	314.6
6 and under 12 months		62.3	34.0	100.9	67.4	18.3	19.9	115.5	50.6	468.9
Total under 1 year		185.8	72.4	274.6	185.1	71.0	53.5	367.8	167.3	1,377.3
1 and under 2 years		124.9	46.3	150.1	96.2	32.8	30.3	179.7	85.9	746.2
2 and under 3 years		127.1	46.0	158.7	77.7	27.8	32.6	218.3	75.1	763.2
3 and under 5 years		176.8	70.2	195.1	90.0	64.7	52.6	310.5	107.0	1,067.0
5 and under 10 years		198.4	84.0	222.3	79.7	80.1	67.8	357.7	115.8	1,205.8
10 years and over		187.1	111.8	187.0	59.6	190.3	88.0	395.1	80.8	1,299.8
Total		1,000.2	430.6	1,187.9	588.3	466.6	324.7	1,829.1	631.9	6,459.3

(a) Includes miners and quarry workers, etc., tradesmen, production-process workers and labourers, n.e.c.

TECHNICAL NOTE

Estimation procedure

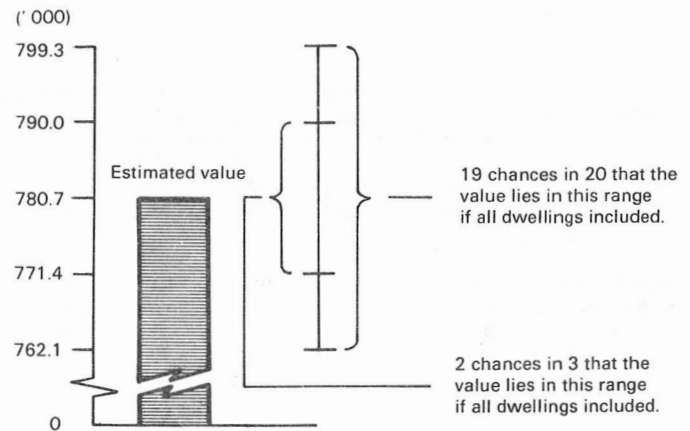
The estimates are derived from the population survey by use of a ratio estimation procedure which ensures that the estimates conform to an independently estimated distribution of the population for each capital city and remainder of State by age and sex, rather than to the corresponding distribution within the sample itself.

Reliability of the estimates

2. Since the estimates in this publication are based on information obtained from occupants of a sample of dwellings, they are subject to sampling variability; that is, they may differ from the figures that would have been produced if all dwellings had been included in the survey. One measure of the likely difference is given by the *standard error*, which indicates the extent to which an estimate might have varied by chance because only a sample of dwellings was included. There are about two chances in three that a sample estimate will differ by less than one standard error from the figure that would have been obtained if all dwellings had been included, and about nineteen chances in twenty that the difference will be less than two standard errors. Another measure of the likely difference is the *relative standard error*, which is obtained by expressing the standard error as a percentage of the estimate.

3. Space does not allow for the separate indication of the standard errors of all estimates in this publication. A table of standard errors for general application is given on the following page. Since they are averages based on calculations for a limited number of past surveys over a wide range of labour force characteristics, these figures will not give a precise measure of the standard error of a particular estimate but they will provide an indication of its magnitude.

4. An example of the calculation and the use of standard errors in relation to estimates of persons is as follows. From Table 21 on page 20, the estimated number of males who, in February 1984, had been in their current job for less than one year is 780,700. Since this estimate is between 500,000 and 1,000,000 in the standard error table, the standard error for Australia will be between 8,300 and 10,000 and can be approximated as 9,300 (rounded to the nearest 100). Therefore, there are about two chances in three that the value that would have been produced if all dwellings had been included in the survey will fall in the range 771,400 to 790,000 and about nineteen chances in twenty that the value will fall within the range 762,100 to 799,300. This example is illustrated in the following diagram.



5. As can be seen from the standard error table, *the smaller the estimate the higher is the relative standard error*. Very small estimates are thus subject to such high standard errors (relative to the size of the estimate) as to detract seriously from their value for most reasonable uses. In the tables in this publication, estimates less than the lowest levels shown in the standard error table have not been published. Although figures for these small components can in some cases be derived by subtraction, they should not be regarded as reliable.

6. Proportions and percentages formed from the ratio of two estimates are also subject to sampling error. The size of the error depends on the accuracy of both the numerator and the denominator. The formula for the relative standard error (RSE) of a proportion is given below:

$$\text{RSE } (x/y) = \sqrt{[\text{RSE } (x)]^2 + [\text{RSE } (y)]^2}$$

7. Considering the example from paragraph 4, the 780,700 males represent 19.4 per cent of the 4,019,400 males working at February 1984. The standard error of 4,019,400 is approximately 16,000 so the relative standard error is 0.4 per cent. The relative standard error for 780,700 is 1.2 per cent. Applying the above formula, the relative standard error of the proportion is $\sqrt{(1.2)^2 + (0.4)^2}$ or 1.1 per cent, giving a standard error for the proportion (19.4 per cent) of 0.2 percentage points. Therefore, there are about two chances in three that the proportion of males who had been in their current job for less than one year is between 19.2 per cent and 19.6 per cent and nineteen chances in twenty the proportion is within the range 19.0 per cent to 19.8 per cent.

8. Published figures may also be used to estimate the difference between two survey estimates (of numbers or percentages). Such a figure is itself an estimate and is therefore subject to sampling error. The sampling error of the difference between two estimates depends on their standard errors and the relationship (correlation) between them. An approximate standard error (SE) of the difference between two estimates ($x-y$) may be calculated by the following formula:

$$SE(x-y) = \sqrt{[SE(x)]^2 + [SE(y)]^2}$$

While this formula will only be exact for differences between separate and uncorrelated characteristics or subpopulations it is expected to provide a good approximation for all differences likely to be of interest in this publication.

9. The imprecision due to sampling variability, which is measured by the standard error, should not be confused with inaccuracies that may occur because of imperfections in reporting by interviewers and respondents and errors made in the coding and processing of data. Inaccuracies of this kind are referred to as the *non-sampling error*, and they may occur in any enumeration, whether it be a full count or only a sample.

STANDARD ERRORS OF ESTIMATES

Size of estimate	N.S.W.	Vic.	Qld	S.A.	W.A.	Tas.	N.T.	A.C.T.	Australia	
									Relative standard error (per cent)	
1,500				—	—	350	—	—		
2,300				570	600	420	570	530		
3,000				630	680	470	640	590		
3,500			850	680	720	500	680	620		
4,000			900	720	760	530	720	650		
4,500			950	750	800	550	760	680	1,100	24.4
5,000	1,300	1,200	990	790	840	570	790	700	1,200	24.0
6,000	1,400	1,300	1,100	850	910	610	850	740	1,300	21.7
7,000	1,500	1,400	1,100	900	970	650	910	780	1,400	20.0
10,000	1,700	1,700	1,300	1,000	1,100	740	1,000	870	1,700	17.0
20,000	2,300	2,200	1,800	1,400	1,500	930	1,400	1,100	2,300	11.5
50,000	3,400	3,100	2,500	1,900	2,000	1,200	1,900	1,300	3,400	6.8
100,000	4,500	4,000	3,200	2,400	2,500	1,500	2,500	1,500	4,500	4.5
200,000	5,800	5,000	4,100	2,900	3,100	1,700		1,600	5,900	2.9
300,000	6,700	5,700	4,700	3,300	3,500				6,900	2.3
500,000	7,900	6,700	5,600	3,800	4,000				8,300	1.7
1,000,000	9,800	8,100	6,900						10,000	1.0
2,000,000	12,000	9,700							13,000	0.7
5,000,000	15,000	12,000							17,000	0.3
10,000,000									21,000	0.2

Estimates below the levels indicated have not been published, see paragraph 5 above.

